



QUICK & CLICK

Up to 30% time-saving!

Discover all the benefits - fast!



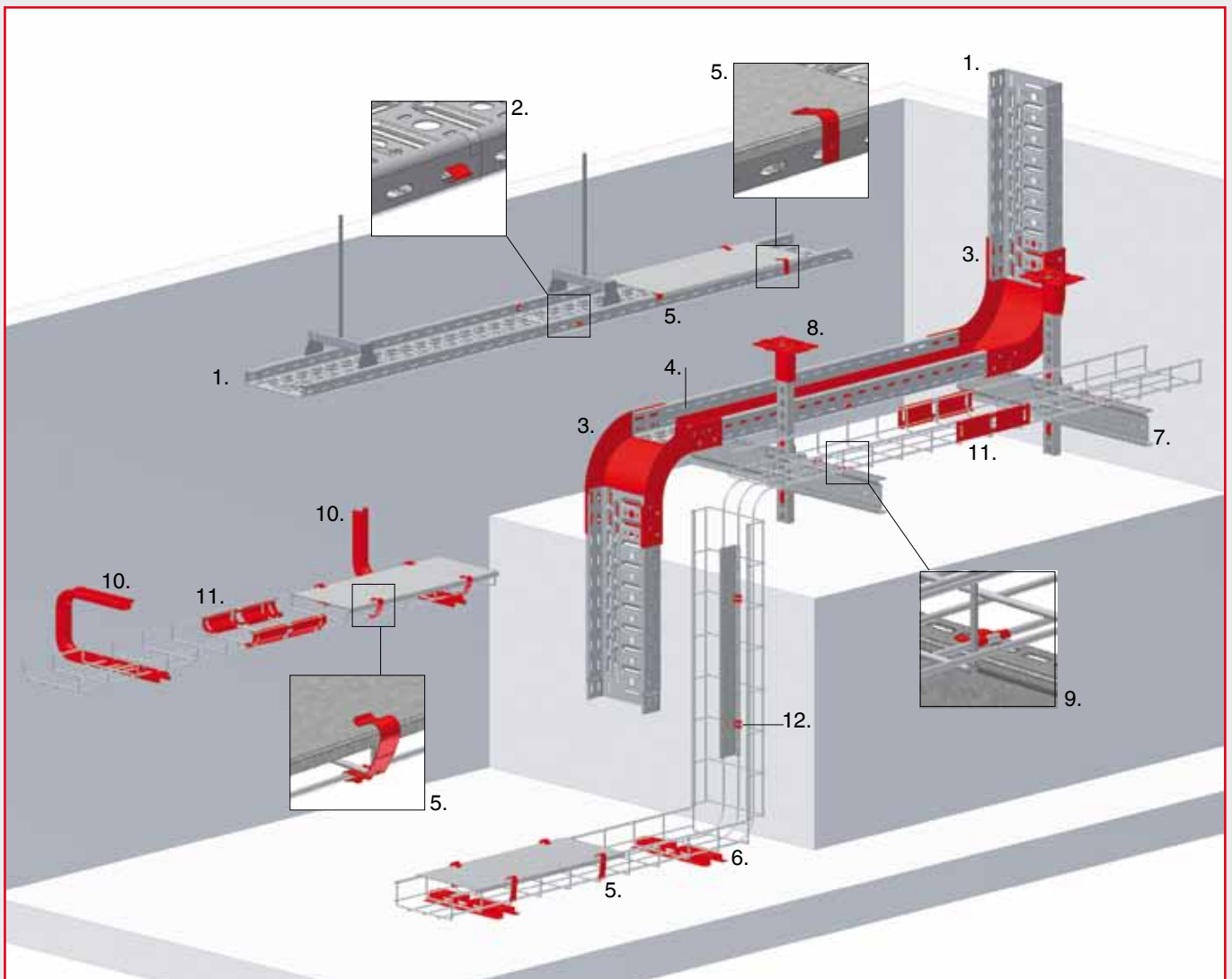
VERGOKAN

As a European specialist in Cable Support Systems, Vergokan is continually developing new products. Inspired by recent trends in the electrical installation market, we offer a range of competitively-priced new products. Discover the triple benefits of a low price, high quality and a time-saving installation, which are characteristic of our products.

CABLE SUPPORT SYSTEMS

Overview of the Quick & Click range

- | | |
|---------------------------------|---|
| 1. KBSI 35 - KBSI 60 | cable tray with inter-locking ends |
| 2. KBV | fast locking of KBSI cable tray |
| 3. VBCL - SBCL | snap-in internal and external rising bends |
| 4. SLIS - CL | clip-in partition |
| 5. DCL - DCO - DCLVF 35 - DCLVF | snap-on lid clips |
| 6. VFVLBCL | snap-in floor bracket for cable basket |
| 7. KCL - CLHS | clip-in support arms |
| 8. KPCL - MPCL | snap-in ceiling profiles |
| 9. VFCL | snap-in cable basket fixing clips |
| 10. COMEGACL - LOMEGACL | snap-in wall and suspension brackets for cable basket |
| 11. KPVF - KPVFL 35 | snap-on joiners for cable basket |
| 12. SLOS - VFSLOSCL | snap-on divider |

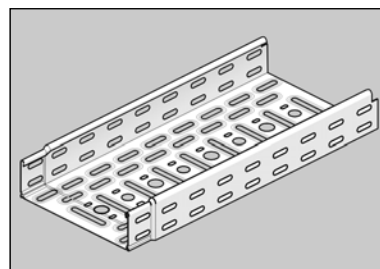
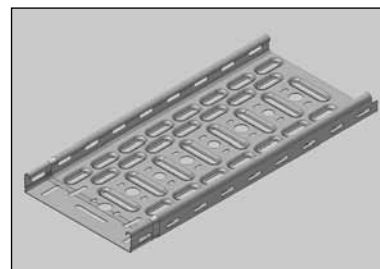


KBSI | Cable trays with inter-locking ends

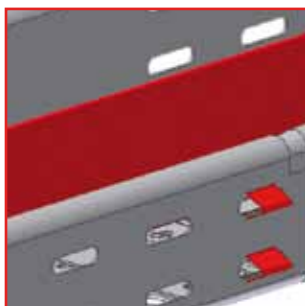
KBSI | height 35 mm and 60 mm



- The huge success of the user-friendly KBSI cable trays is testimony to the tremendous advantages of faster installation.
- The cable trays require no joiners and reduce installation time by at least 30%
- Earth continuity is assured by the KBV clip
- Inter-locking ends
- Extra cable capacity
- Easier cable fixing thanks to the staggered perforation pattern
- Higher stability thanks to the embedded perforations
- Improved aeration of the cables thanks to the embedded perforations
- KBSI 60 is available in lengths up to 6m
- **Standard finish:** pre-galvanised



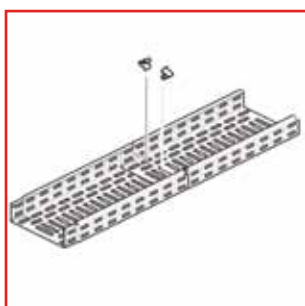
Advantages:
Quick
Solid
Simple



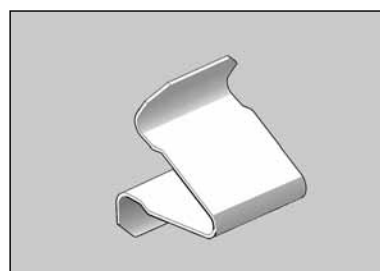
Code	Height mm	Width mm	Thickness mm	Length mm
KBSI 35*200*0.75	35	200	0.75	3000
KBSI 35*200*1.00	35	200	1.00	3000
KBSI 60*075*0.75	60	75	0.75	3000
KBSI 60*075*1.00	60	75	1.00	3000
KBSI 60*075*1.25	60	75	1.25	3000
KBSI 60*100*0.75	60	100	0.75	3000
KBSI 60*100*1.00	60	100	1.00	3000
KBSI 60*100*1.25	60	100	1.25	3000
KBSI 60*150*0.75	60	150	0.75	3000
KBSI 60*150*1.00	60	150	1.00	3000
KBSI 60*150*1.25	60	150	1.25	3000
KBSI 60*200*0.75	60	200	0.75	3000
KBSI 60*200*1.00	60	200	1.00	3000
KBSI 60*200*1.25	60	200	1.25	3000
KBSI 60*250*0.75	60	250	0.75	3000
KBSI 60*250*1.00	60	250	1.00	3000
KBSI 60*250*1.25	60	250	1.25	3000
KBSI 60*300*0.75	60	300	0.75	3000
KBSI 60*300*1.00	60	300	1.00	3000
KBSI 60*300*1.25	60	300	1.25	3000
KBSI 60*400*1.00	60	400	1.00	3000
KBSI 60*400*1.25	60	400	1.25	3000
KBSI 60*500*1.00	60	500	1.00	3000
KBSI 60*500*1.25	60	500	1.25	3000
KBSI 60*600*1.00	60	600	1.00	3000
KBSI 60*600*1.25	60	600	1.25	3000

Advantages:
Quick
Earthing

KBV | Fast locking of KBSI cable trays



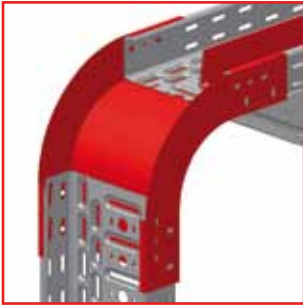
- Snap-in clips for faster connection of trays
- Increased stability and safe locking of the inter-locking ends
- Earth continuity is assured
- No joiners, bolts or nuts required, which results in a lower in-place cost
- **Standard finish:** Spring steel



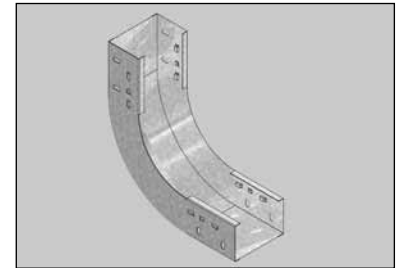
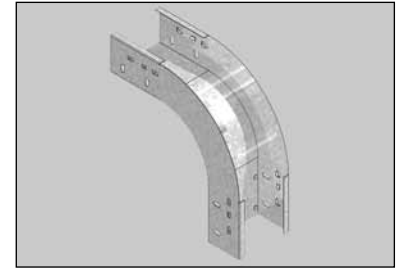
Snap-in Rising Bends

VBCL | Snap-in external rising bend

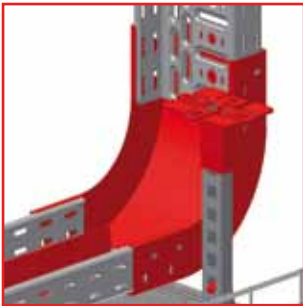
SBCL | Snap-in internal rising bend



- External and internal rising bends for the 60mm wall height cable tray are now available in a snap-in version
- The bends slide over the cable tray end maximising the strength of the joint
- Lugs on the bends snap into the sidewall of the cable tray locking it in place
- Rapid assembly with minimum effort
- Lids can easily be fitted to the bends
- Only available in height 60 mm



Advantages:
Solid
Fast
Easy



- **Standard finish:** pre-galvanised

Code	Height mm	Width mm
SBCL 90°60°050	60	50
SBCL 90°60°075	60	75
SBCL 90°60°100	60	100
SBCL 90°60°150	60	150
SBCL 90°60°200	60	200
SBCL 90°60°250	60	250
SBCL 90°60°300	60	300
SBCL 90°60°400	60	400
SBCL 90°60°500	60	500
SBCL 90°60°600	60	600

Code	Height mm	Width mm
VBCL 90°60°050	60	50
VBCL 90°60°075	60	75
VBCL 90°60°100	60	100
VBCL 90°60°150	60	150
VBCL 90°60°200	60	200
VBCL 90°60°250	60	250
VBCL 90°60°300	60	300
VBCL 90°60°400	60	400
VBCL 90°60°500	60	500
VBCL 90°60°600	60	600

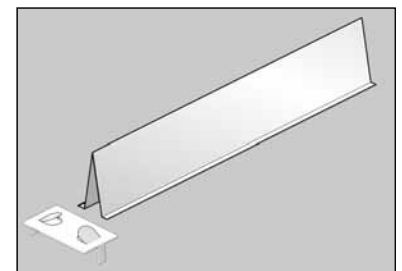
SLIS - CL | Clip-in partition



- SLIS partition is easily fixed into cable tray. First push the CL clip into the slots in the tray and fold the tabs over, then clip the partition into the clips – done!
- Partition is 60mm high and is supplied in 3m lengths
- Can be used in any width tray from 200mm wide

- **Standard finish:** pre-galvanised

Advantages:
Simple
Quick

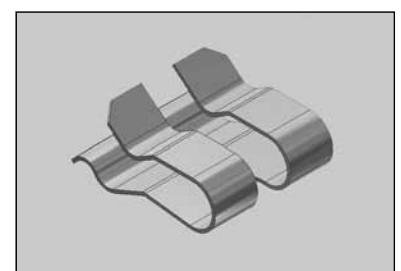


SLOS - VFSLOSCL | Snap-on divider



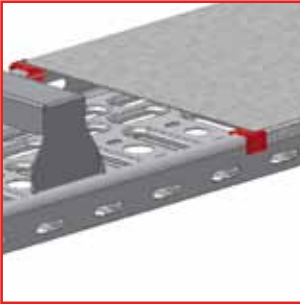
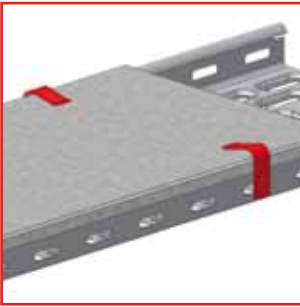
- Also for VF and VFL baskets, SLOS and VFSLOSCL offer an important time-saving. The clip is attached under the cross-wire and with the upper lips in one of the slots of the divider. The construction can be blocked by slipping it over the longitudinal wire.

- **Standard finish:** Spring steel, electro zinc-plated



Lid clamp clips for cable tray and KL cable ladder

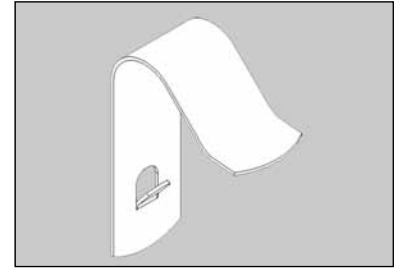
DCL | DCO



DCL

- Snap-on clip for fast fixing of the lid onto cable tray and KL cable ladder
- Not applicable on cable tray KG
- Fix two per metre
- **Standard finish:** stainless steel

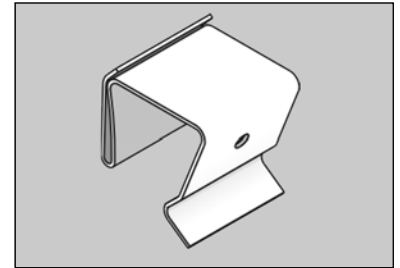
Advantages:
Rapid
Solid



DCO

- This captive lid clip is first pushed onto the lid, then the lid is snapped onto the cable tray or KL cable ladder
- Fix two per metre
- **Standard finish:** stainless steel

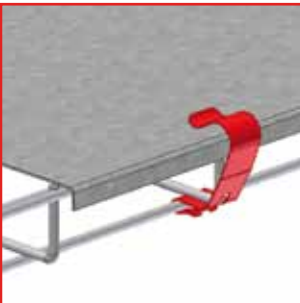
Advantages:
Hitched
User-friendly



Captive lid clamp clips for cable baskets

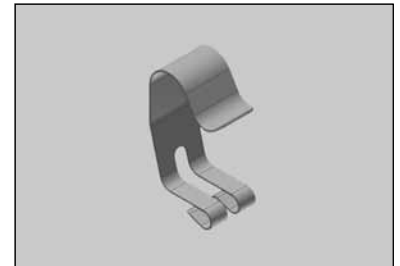
Vergokan also produces lids to close the wire cable trays and to protect the cables. The universal lids D can be fixed onto the wire cable trays, using the snap-on lid clamps.

DCLVF 35 | DCLVF



DCLVF 35

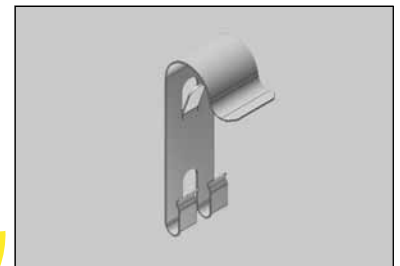
- Fixes lid to cable baskets with a 35mm sidewall
- Snap the clip onto the basket at a join of a lengthwise and crosswise wire
- After positioning the lid snap the clip into place
- Fix two per metre
- **Standard finish:** stainless steel



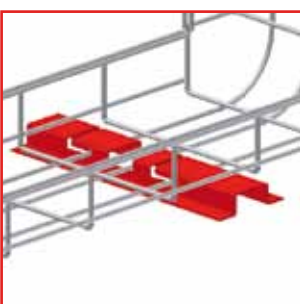
DCLVF

- Fixes lid to cable baskets with a 60, 85 or 110mm sidewall
- Snap the clip onto the basket at a join of a lengthwise and crosswise wire
- After positioning the lid snap the clip into place
- Fix two per metre
- **Standard finish:** stainless steel

Advantages:
Hitched
Reliable
Quick

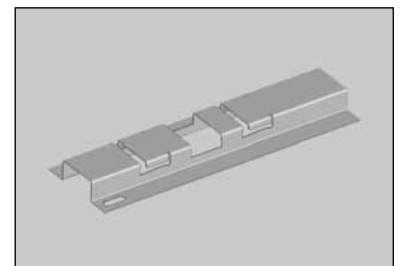


VFVLBCL | Snap-in floor and wall bracket for cable baskets

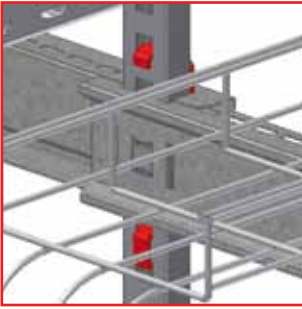


- This innovative bracket is the fastest method of fixing cable basket to a floor or wall
- Cable basket is snapped into the bracket, locking it in place
- No bolts or nuts required
- The brackets can be easily fixed using two nail plugs
- **Standard finish:** pre-galvanised

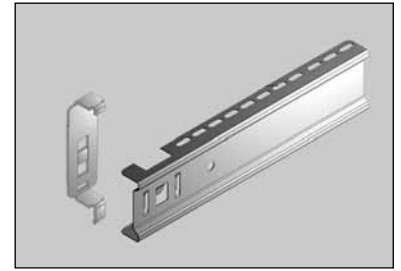
Advantages:
Quick
Solid
Simple



KCL - CLHS | Bracket clips



- The combination of KCL support arms and HSLECL ceiling posts provides a support bracket solution that is assembled without using nuts and bolts
- The CLHS adapter clip snaps into the ceiling post to enable the fitting of a second support arm
- **Standard finish:** pre-galvanised



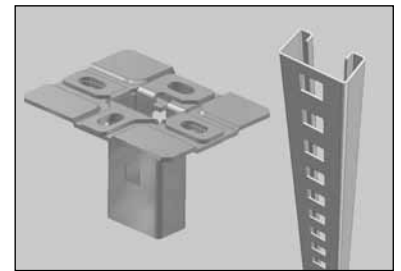
Advantages:
Rapide
Strong
Simple

Code	Height mm	Width mm
KCL 100	80	100
KCL 150	80	150
KCL 200	80	200
KCL 250	80	250
KCL 300	80	300
KCL 400	80	400
KCL 500	80	500
KCL 600	80	600

KPCL - MPCL | Snap together ceiling post



- The KPCL head plate and MPCL post combine to provide a flexible ceiling post solution
- The system is so easy to install. First fix the head plate to the soffit; then attach the support arms onto the ceiling post; finally snap the ceiling post into the head plate – done!
- After the head plate is fixed to the soffit the rest of the support system is fixed together without using nuts and bolts
- **Standard finish:** pre-galvanised

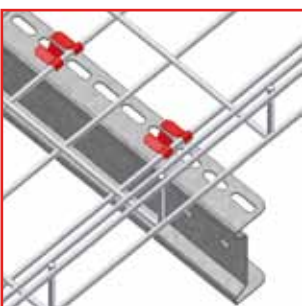


Advantages:
Pre-assembling
Better value

Code	Height mm	Width mm	Thickness mm	Length mm
MPCL 41*21*1.50*200	41	21	1.50	200
MPCL 41*21*1.50*300	41	21	1.50	300
MPCL 41*21*1.50*400	41	21	1.50	400
MPCL 41*21*1.50*500	41	21	1.50	500
MPCL 41*21*1.50*600	41	21	1.50	600
MPCL 41*21*1.50*800	41	21	1.50	800
MPCL 41*21*1.50*3000	41	21	1.50	3000

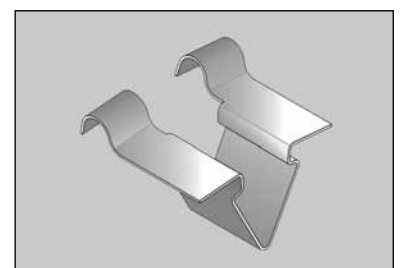
Code	Height mm	Width mm	Thickness mm	Length mm
KPCL 41*21	-	-	-	-

VFCL | Cable basket clips



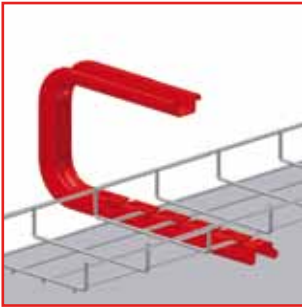
- Snap-on clip for fast fixing of the cable basket onto support arms
- No bolts or nuts required
- **Standard finish:** electro zinc-plated

Advantages:
Extra strong
Reliable
Simple



Snap-in suspension and wall bracket for cable baskets

COMEGACL - LOMEGACL



Advantages:
Quick-win
Strong
Universal



COMEGACL

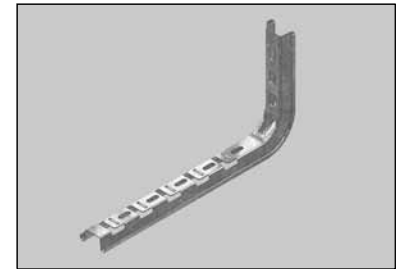
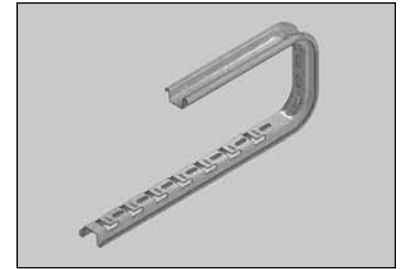
- This open-sided bracket provides side access to the basket making cable installation quick and easy
- Cable basket is snapped into the bracket, locking it in place
- No bolts or nuts required
- The brackets can be fixed directly to the soffit or suspended on a threaded rod

- **Standard finish:** pre-galvanised

LOMEGACL

- Cable basket is snapped into the bracket, locking it in place
- No bolts or nuts required

- **Standard finish:** pre-galvanised

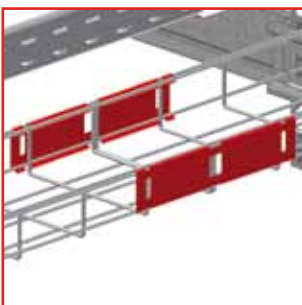


Code	Height mm	Width mm
COMEGACL 170*100	170	100
COMEGACL 170*200	170	200
COMEGACL 170*300	170	300
COMEGACL 170*400	170	400
COMEGACL 170*500	170	500

Code	Height mm	Width mm
LOMEGACL 170*100	170	100
LOMEGACL 170*200	170	200
LOMEGACL 170*300	170	300
LOMEGACL 170*400	170	400
LOMEGACL 170*500	170	500

Snap-on joiners for cable baskets

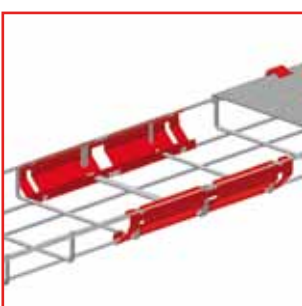
KPVF - KPVFL 35



KPVF

- Snap-on joiner for 60mm wall cable baskets
- No bolts or nuts required

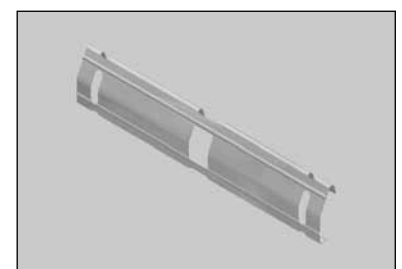
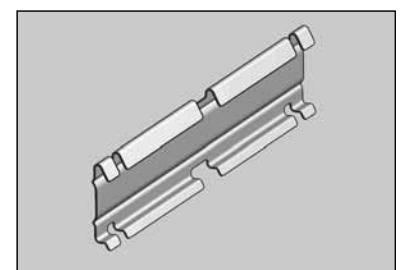
- **Standard finish:** pre-galvanised



KPVFL 35

- Snap-on joiner for 35mm wall cable baskets
- No bolts or nuts required

- **Standard finish:** pre-galvanised



Advantages:
Quick
Reliable
Strong

**HEAD OFFICE - BELGIUM
VERGOKAN**

Meersbloem Melden 16
9700 Oudenaarde
BELGIUM
T: + 32 55 31 83 35
F: + 32 55 31 43 88
benelux@vergokan.com
export@vergokan.com
www.vergokan.com

**REGIONAL OFFICE RUSSIAN FEDERATION
OOO VERGOKAN**

Promyshlennaya street, 2
pgt.Redkino, Konakovo district
Tver region, 171260
Russian Federation
T./F: +7 (48242) 5-95-79
russia@vergokan.com