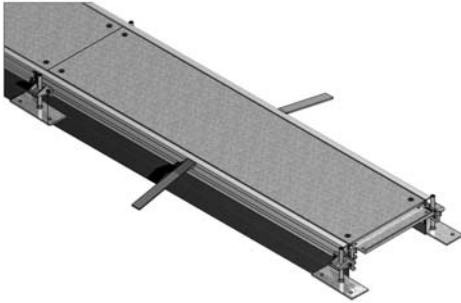


Open flush floor trunking



Standard finish

1		Reference	Height	Width	Thickness	Length	kg/m	Packaging	Stock	Unit			
-	-	OVG 200*3	55-110	200	3,00	2400	7,610	2.4	✓	m			
-	-	OVG 300*3	55-110	300	3,00	2400	10,200	2.4	✓	m			
-	-	OVG 400*4	55-110	400	4,00	2400	15,920	2.4	✓	m			

More technical specifications for this product can be found at the end of this chapter.

- used in screeded floors to be finished with carpet or vinyl
- levelling range: 55 to 110 mm
- hinged covers can be mounted from levelling height 70
- universal side for all levelling heights
- straightforward assembly of accessories with plastic corner connector
- provided with concrete anchor of polypropylene
- for both new constructions and renovations
- ideal for frequent addition or removal of cables

according to VDE

TECHNICAL INFORMATION

OVG

Assembly

Each flush floor trunking comes standard with the following products.

- 2x Extrusion profile (OVGPR)
- 2x Universal sides (OVGZ)
- 3x Cross bars (OVGTR)
- 2x Carpet borders 3 mm (OVGTAP)
- 3x Sealed covers (DOVG)
- 6x Levelling pieces (OVGN)
- 12x Tapered head metal screws (ST 4.8x23)
- 6x Screed anchor (OVGAN)
- 12x Tapered head bolts (B 5*16)
- 6x Levelling screws (OVGNS 78)
- 2x Baseplates (OVGVPL)

Mounting

- 1) Slip the OVGZ (a) into the chamber (b) of the OVGPR (c). A levelling range of 55-80 mm is obtained by placing the OVGZ with its longest side on the ground. A levelling range of 80-110 mm is obtained by placing the OVGZ with its shortest side on the ground
- 2) Mount 3 OGVSTs (d) per OVGPR (c). The 2 OGVST provided with a baseplate (e) are mounted at the end where an OVGTR (f) has been placed. These 2 OGVST must be positioned so that they overlap the duct with half of their length. The preassembled baseplates (e) must abut against the OVGZ (a). Mount the other OGVST's at intervals of 800 mm. Extra OGVSTs can be easily added by hooking them into the slot provided (g) in the OVGPR
- 3) The 2 OGVST, which overlap the duct, will be used for coupling with the abutting length.
- 4) Determine how you will use the OVGTA 3 (h): flush mounted or not. Turn levelling screws (i) to the right for levelling up. Turn levelling screws (i) to the left for levelling down. Hook the OVGAN (j) into the slot (g) in the OVGPR. Make sure to seal up any openings with adhesive tape.
- 5) The system can now be filled with screed (m) and subsequently finished with carpet (l).

Remark

! To obtain a levelling height of less than 80 mm, shorten the levelling screws to below the top of the aluminium section (k) before pouring the screed (m).

! Note: when laying or removing cables we advise you not to remove the traverses between the aluminium sections.

OVG

Mounting principle

