

STAINLESS STEEL



STAINLESS STEEL

CABLE TRAYS		
INOXKBSI 60	Cable tray with interlocking ends	8-5
INOXKG 60	Cable tray not perforated	8-6
INOXD	Universal cover	8-7
ACCESSORIES CABLE TRAYS		
INOXB 90	Horizontal bend 90°	8-8
INOXDB 90	Cover for horizontal bend 90°	8-8
INOXSB 90	Rising elbow 90°	8-9
INOXDSB 90	Cover for rising elbow 90°	8-9
INOXVB 90	Low elbow 90°	8-10
INOXDVB 90	Cover for low elbow 90°	8-10
INOXAS	Horizontal adapter 90°	8-11
INOXDAS	Cover for horizontal adapter 90°	8-11
INOXT	Horizontal T-piece	8-12
INOXDT	Cover for horizontal T-piece	8-12
INOXKR	Cross-over	8-13
INOXDKR	Cover for cross-over	8-13
INOXDS 60	Hinged joint	8-14
INOXSLOS 60	Division plate free	8-14
INOXV 60*200	Jointing plate	8-14
WIRE CABLE TRAYS		
INOXVF 60	Wire cable tray heavy duty	8-15
INOXD	Universal cover	8-16
DCLVF	Captive lid clamp VF/VFL	8-16
ACCESSORIES WIRE CABLE TRAYS		
INOXKPVF	Jointing plate for wire cable tray	8-17
INOXVFK	Jointing clamp for wire cable tray	8-17
INOXVFKK 25	Jointing clamp for wire cable tray	8-17
INOXVFKG 30	Jointing clamp for wire cable tray	8-18
INOXVFKS	Support joint for wire cable tray	8-18
INOXVFCB	Central suspension bracket	8-18
INOXVFM	Wall bracket	8-19
INOXVFM	Wall and mounting bracket	8-19
INOXVFO	Suspension piece	8-19
INOXVMB	Floor and wall bracket	8-20
CABLE LADDERS		
INOXKL	Cable ladder	8-21
ACCESSORIES CABLE LADDERS		
INOXKLB	Horizontal bend for INOXKL	8-22
INOXKLT	T-piece for INOXKL	8-22
INOXKLN	Cross-over for INOXKL	8-23
INOXKLV	Flexible (Rising and Low) Bend INOXKL	8-23
INOXAB 60	Distance bracket for INOXKL	8-24
INOXBK	Fixation for bracket for INOXKL	8-24
MOUNTING SYSTEMS		
INOXPB	Ceiling bracket	8-24
INOXVOMEGA	Connector piece	8-25
INOXCOMEGA 290	Open suspension bracket	8-25
INOXLMEGA 150	Bracket / Ceiling profile	8-26
INOXWK	Joined bracket	8-26
INOXHSLE	Single ceiling profile	8-27
INOXMP 41*21*2.50 SL	Assembly profile	8-27
INOXMP 41*41*2.50 SL	Assembly profile	8-28
INOXTIM	Threaded rod (DIN 975)	8-28
INOXVM	Toothed round head bolt/nut (DIN 603)	8-28
INOXGM	Sliding nut GM41/M12	8-29
INOXB	Bolt (DIN 933)	8-29
INOXM	Nut (DIN 934)	8-30
INOXCRO	Flat giant washer (DIN 9021)	8-30
INOXRO	Giant washer (DIN 125-1 A)	8-31
	TECHNICAL INFORMATION	8-32

Introduction

INOX 316

Stainless steel is used in locations where high resistance to corrosion is a primary requisite as well as sometimes in extreme circumstances (high temperature and/or pressure).

Stainless steel consists of an iron alloy which contains a minimum of 13% chromium. The quantity of chromium prevents the formation of corrosion in a non-polluted atmosphere. The high corrosion resistance is the result of the formation of a thin oxide film on the surface, which prevents the steel beneath from being damaged. If this oxide film is damaged as a result of mechanical or chemical treatment and the circumstances are such that it is not repaired, then local corrosion may occur, while the remainder of the surface remains unaffected. For example, in an acid, reducing solution it is usually not possible for the metal to form a protective oxide film.

At the moment there are some 200 different kinds of steels that may be described as "stainless" steel. Every year modified or new alloys appear. Some alloys now contain almost 30% chromium. In addition, a large number of other elements are added to obtain specific properties, depending on the manufacturing process.

Among the added elements, there is nickel, carbon, titanium, aluminium, copper, sulphur and selenium.

One of the best known standards is that drawn up by the American Iron and Steel Institute (AISI), under which a specific quality of stainless steel is indicated by three figures. Another well-known method is the German method whereby the stainless steel is characterised using a material number. In practice, the question of the extent to which a specific type of stainless steel defined in terms of the AISI standard corresponds to a material number often arises.

AISI
STAINLESS STEEL 316L

The general characteristics of stainless steel 316 are as follows:

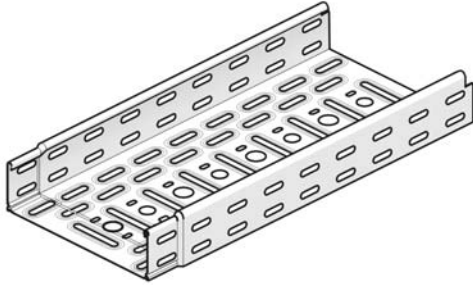
- austenite, chromium-nickel-molybdenum stainless and heat-resistant steel;
- superior resistance to corrosion as compared to most other chromium-nickel types of steel in several corrosive environments, including the maritime climate;
- very good creep strength at high temperatures (up to 760°C);
- high resistance to corrosion by sulphuric acid.

Applications

- apparatus and parts for the chemical and cellulose industry;
- paper and pulp industry;
- pharmaceutical industry;
- photographic industry;
- textile industry;
- dye industry;
- fermentation vats;
- dairy factories;
- breweries.

INOXKBSI 60

Cable tray with interlocking ends



Interlocking ends
Alternative perforations
Return flanges

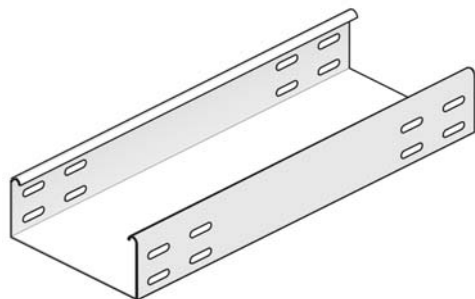
Length	3000 mm
Standard finish	Stainless Steel

1		Reference	Height	Width	Thickness	Length	kg/m	Packaging	Stock	Unit			
-	-	INOXKBSI 60*075*0.80	60	75	0,80	3000	1,200	3	✓	m			
-	-	INOXKBSI 60*100*0.80	60	100	0,80	3000	1,300	3	✓	m			
-	-	INOXKBSI 60*150*0.80	60	150	0,80	3000	1,600	3	✓	m			
-	-	INOXKBSI 60*200*0.80	60	200	0,80	3000	1,900	3	✓	m			
-	-	INOXKBSI 60*300*0.80	60	300	0,80	3000	2,400	3	✓	m			
-	-	INOXKBSI 60*400*1.00	60	400	1,00	3000	3,700	3	✓	m			
-	-	INOXKBSI 60*500*1.00	60	500	1,00	3000	4,500	3	✓	m			
-	-	INOXKBSI 60*600*1.00	60	600	1,00	3000	5,300	3	✓	m			

More technical specifications for this product can be found at the end of this chapter.

INOXKG 60

Cable tray not perforated



Smooth surface
Return flanges

Length	3000 mm
Standard finish	Stainless Steel

1		Reference	Height	Width	Thickness	Length	kg/m	Packaging	Stock	Unit			
-	-	INOXKG 60*075*0.80	60	75	0,80	3000	1,400	30	-	m			
-	-	INOXKG 60*100*0.80	60	100	0,80	3000	1,500	30	-	m			
-	-	INOXKG 60*150*0.80	60	150	0,80	3000	1,830	30	-	m			
-	-	INOXKG 60*200*0.80	60	200	0,80	3000	2,170	30	-	m			
-	-	INOXKG 60*300*0.80	60	300	0,80	3000	2,770	30	-	m			
-	-	INOXKG 60*400*1.00	60	400	1,00	3000	4,460	30	-	m			
-	-	INOXKG 60*500*1.00	60	500	1,00	3000	5,260	30	-	m			
-	-	INOXKG 60*600*1.00	60	600	1,00	3000	6,130	30	-	m			

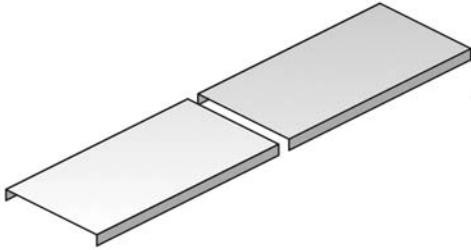
To fix with:

-	-	INOXV 60*200	60	200	-	-	0,090	48	✓	piece			
---	---	--------------	----	-----	---	---	-------	----	---	-------	--	--	--

More technical specifications for this product can be found at the end of this chapter.

INOXD

Universal cover



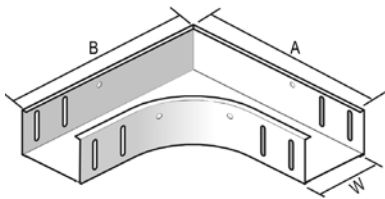
Length	3000 mm
Standard finish	Stainless Steel

1		Reference	Height	Width	Thickness	Length	kg/m	Packaging	Stock	Unit			
-	-	INOXD 075	-	75	-	3000	0,500	3	-	m			
-	-	INOXD 100	-	100	-	3000	0,820	3	-	m			
-	-	INOXD 150	-	150	-	3000	1,170	3	-	m			
-	-	INOXD 200	-	200	-	3000	1,420	3	-	m			
-	-	INOXD 300	-	300	-	3000	2,100	3	-	m			
-	-	INOXD 400	-	400	-	3000	4,150	3	-	m			
-	-	INOXD 500	-	500	-	3000	5,000	3	-	m			
-	-	INOXD 600	-	600	-	3000	5,650	3	-	m			
To fix with:													
-	-	DCL	-	-	-	-	0,005	96	✓	piece			

Cover clamp DCL to be ordered separately.
2 pieces per meter.

INOXB 90

Horizontal bend 90°



Slide over the cable trays

W	75	100	150	200	300	400	500	600
A	280	305	355	405	505	605	705	805
B	280	305	355	405	505	605	705	805

Radius 100 mm

Standard finish Stainless Steel

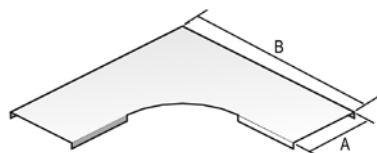
1	Reference	Height	Width	Thickness	Length	kg/piece	Packaging	Stock	Unit
-	INOXB 90*60*075	60	75	-	-	0,850	1	-	piece
-	INOXB 90*60*100	60	100	-	-	1,080	1	-	piece
-	INOXB 90*60*150	60	150	-	-	1,480	1	-	piece
-	INOXB 90*60*200	60	200	-	-	1,750	1	-	piece
-	INOXB 90*60*300	60	300	-	-	2,700	1	-	piece
-	INOXB 90*60*400	60	400	-	-	3,400	1	-	piece
-	INOXB 90*60*500	60	500	-	-	5,900	1	-	piece
-	INOXB 90*60*600	60	600	-	-	7,200	1	-	piece

To fix with:

-	INOXVM 6*10	-	-	M6	10	0,010	250	✓	piece
---	-------------	---	---	----	----	-------	-----	---	-------

INOXDB 90

Cover for horizontal bend 90°



	75	100	150	200	300	400	500	600
A	81	106	156	206	306	406	506	606
B	281	306	356	406	506	606	706	806

Radius 100 mm

Standard finish Stainless Steel

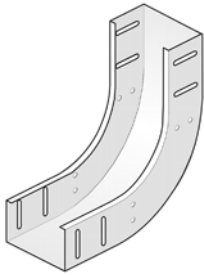
1	Reference	Height	Width	Thickness	Length	kg/piece	Packaging	Stock	Unit
-	INOXDB 90*075	-	75	-	-	0,300	1	-	piece
-	INOXDB 90*100	-	100	-	-	0,440	1	-	piece
-	INOXDB 90*150	-	150	-	-	0,720	1	-	piece
-	INOXDB 90*200	-	200	-	-	0,950	1	-	piece
-	INOXDB 90*300	-	300	-	-	1,920	1	-	piece
-	INOXDB 90*400	-	400	-	-	2,400	1	-	piece
-	INOXDB 90*500	-	500	-	-	3,540	1	-	piece
-	INOXDB 90*600	-	600	-	-	6,130	1	-	piece

To fix with:

-	DCL	-	-	-	-	0,005	96	✓	piece
---	-----	---	---	---	---	-------	----	---	-------

Accessories

INOXSB 90

Rising elbow 90°


Slide over the cable trays

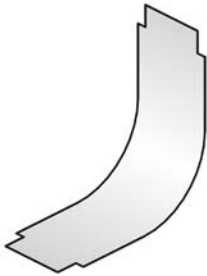
Radius	100 mm
Standard finish	Stainless Steel

1		Reference	Height	Width	Thickness	Length	kg/piece	Packaging	Stock	Unit			
-	-	INOXSB 90*60*075	60	75	-	-	0,650	1	-	piece			
-	-	INOXSB 90*60*100	60	100	-	-	0,730	1	-	piece			
-	-	INOXSB 90*60*150	60	150	-	-	0,880	1	-	piece			
-	-	INOXSB 90*60*200	60	200	-	-	1,000	1	-	piece			
-	-	INOXSB 90*60*300	60	300	-	-	1,180	1	-	piece			
-	-	INOXSB 90*60*400	60	400	-	-	1,430	1	-	piece			
-	-	INOXSB 90*60*500	60	500	-	-	1,900	1	-	piece			
-	-	INOXSB 90*60*600	60	600	-	-	2,150	1	-	piece			

To fix with:

-	-	INOXVM 6*10	-	-	M6	10	0,010	250	✓	piece			
---	---	-------------	---	---	----	----	-------	-----	---	-------	--	--	--

INOXDSB 90

Cover for rising elbow 90°


Radius	100 mm
Standard finish	Stainless Steel

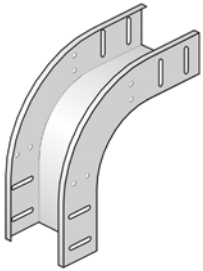
1		Reference	Height	Width	Thickness	Length	kg/piece	Packaging	Stock	Unit			
-	-	INOXDSB 90*075	-	75	-	-	0,180	1	-	piece			
-	-	INOXDSB 90*100	-	100	-	-	0,250	1	-	piece			
-	-	INOXDSB 90*150	-	150	-	-	0,360	1	-	piece			
-	-	INOXDSB 90*200	-	200	-	-	0,510	1	-	piece			
-	-	INOXDSB 90*300	-	300	-	-	0,730	1	-	piece			
-	-	INOXDSB 90*400	-	400	-	-	1,020	1	-	piece			
-	-	INOXDSB 90*500	-	500	-	-	1,050	1	-	piece			
-	-	INOXDSB 90*600	-	600	-	-	1,600	1	-	piece			

To fix with:

-	-	DCL	-	-	-	-	0,005	96	✓	piece			
---	---	-----	---	---	---	---	-------	----	---	-------	--	--	--

INOXVB 90

Low elbow 90°



Slide over the cable trays

Radius	100 mm
Standard finish	Stainless Steel

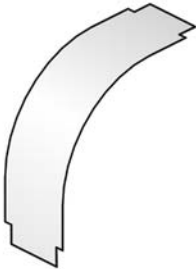
1		Reference	Height	Width	Thickness	Length	kg/piece	Packaging	Stock	Unit			
-	-	INOXVB 90°60*075	60	75	-	-	0,630	1	-	piece			
-	-	INOXVB 90°60*100	60	100	-	-	0,650	1	-	piece			
-	-	INOXVB 90°60*150	60	150	-	-	0,780	1	-	piece			
-	-	INOXVB 90°60*200	60	200	-	-	0,850	1	-	piece			
-	-	INOXVB 90°60*300	60	300	-	-	1,080	1	-	piece			
-	-	INOXVB 90°60*400	60	400	-	-	1,330	1	-	piece			
-	-	INOXVB 90°60*500	60	500	-	-	1,430	1	-	piece			
-	-	INOXVB 90°60*600	60	600	-	-	1,600	1	-	piece			

To fix with:

-	-	INOXVM 6*10	-	-	M6	10	0,010	250	✓	piece			
---	---	-------------	---	---	----	----	-------	-----	---	-------	--	--	--

INOXDVB 90

Cover for low elbow 90°



Radius	100 mm
Standard finish	Stainless Steel

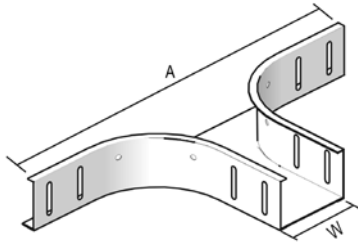
1		Reference	Height	Width	Thickness	Length	kg/piece	Packaging	Stock	Unit			
-	-	INOXDVB 90°60*075	-	75	-	-	0,220	1	-	piece			
-	-	INOXDVB 90°60*100	-	100	-	-	0,320	1	-	piece			
-	-	INOXDVB 90°60*150	-	150	-	-	0,480	1	-	piece			
-	-	INOXDVB 90°60*200	-	200	-	-	0,630	1	-	piece			
-	-	INOXDVB 90°60*300	-	300	-	-	0,960	1	-	piece			
-	-	INOXDVB 90°60*400	-	400	-	-	1,270	1	-	piece			
-	-	INOXDVB 90°60*500	-	500	-	-	1,400	1	-	piece			
-	-	INOXDVB 90°60*600	-	600	-	-	1,950	1	-	piece			

To fix with:

-	-	DCL	-	-	-	-	0,005	96	✓	piece			
---	---	-----	---	---	---	---	-------	----	---	-------	--	--	--

Accessories

INOXAS

Horizontal adapter 90°


Slide over the cable trays

W	75	100	150	200	300	400	500	600
A	483	508	558	608	708	808	908	1008

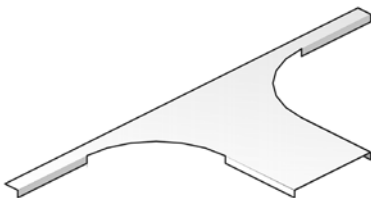
Radius	100 mm
Standard finish	Stainless Steel

1		Reference	Height	Width	Thickness	Length	kg/piece	Packaging	Stock	Unit
-	-	INOXAS 60*075	60	75	-	-	0,730	1	-	piece
-	-	INOXAS 60*100	60	100	-	-	0,800	1	-	piece
-	-	INOXAS 60*150	60	150	-	-	0,830	1	-	piece
-	-	INOXAS 60*200	60	200	-	-	0,930	1	-	piece
-	-	INOXAS 60*300	60	300	-	-	1,050	1	-	piece
-	-	INOXAS 60*400	60	400	-	-	1,250	1	-	piece
-	-	INOXAS 60*500	60	500	-	-	1,650	1	-	piece
-	-	INOXAS 60*600	60	600	-	-	1,900	1	-	piece

To fix with:

-	-	INOXVM 6*10	-	-	M6	10	0,010	250	✓	piece
---	---	-------------	---	---	----	----	-------	-----	---	-------

INOXDAS

Cover for horizontal adapter 90°


Radius	100 mm
Standard finish	Stainless Steel

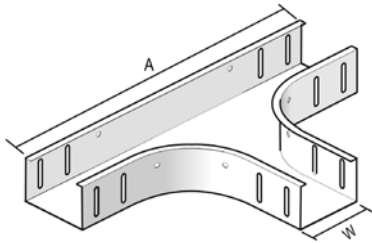
1		Reference	Height	Width	Thickness	Length	kg/piece	Packaging	Stock	Unit
-	-	INOXDAS 075	-	75	-	-	0,220	1	-	piece
-	-	INOXDAS 100	-	100	-	-	0,240	1	-	piece
-	-	INOXDAS 150	-	150	-	-	0,360	1	-	piece
-	-	INOXDAS 200	-	200	-	-	0,400	1	-	piece
-	-	INOXDAS 300	-	300	-	-	0,680	1	-	piece
-	-	INOXDAS 400	-	400	-	-	0,750	1	-	piece
-	-	INOXDAS 500	-	500	-	-	0,980	1	-	piece
-	-	INOXDAS 600	-	600	-	-	1,130	1	-	piece

To fix with:

-	-	DCL	-	-	-	-	0,005	96	✓	piece
---	---	-----	---	---	---	---	-------	----	---	-------

INOXT

Horizontal T-piece



Slide over the cable trays

W	75	100	150	200	300	400	500	600
A	483	508	558	608	708	808	908	1008

Radius	100 mm
Standard finish	Stainless Steel

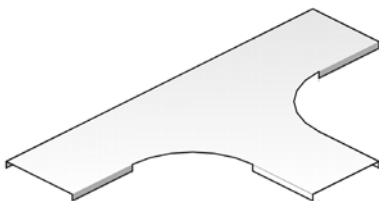
1		Reference	Height	Width	Thickness	Length	kg/piece	Packaging	Stock	Unit
-	-	INOXT 60*075	60	75	-	-	1,300	1	-	piece
-	-	INOXT 60*100	60	100	-	-	1,450	1	-	piece
-	-	INOXT 60*150	60	150	-	-	1,850	1	-	piece
-	-	INOXT 60*200	60	200	-	-	2,100	1	-	piece
-	-	INOXT 60*300	60	300	-	-	2,950	1	-	piece
-	-	INOXT 60*400	60	400	-	-	3,900	1	-	piece
-	-	INOXT 60*500	60	500	-	-	6,800	1	-	piece
-	-	INOXT 60*600	60	600	-	-	8,100	1	-	piece

To fix with:

-	-	INOXVM 6*10	-	-	M6	10	0,010	250	✓	piece
---	---	-------------	---	---	----	----	-------	-----	---	-------

INOXDT

Cover for horizontal T-piece



Radius	100 mm
Standard finish	Stainless Steel

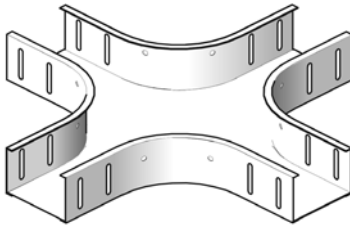
1		Reference	Height	Width	Thickness	Length	kg/piece	Packaging	Stock	Unit
-	-	INOXDT 075	-	75	-	-	0,480	1	-	piece
-	-	INOXDT 100	-	100	-	-	0,620	1	-	piece
-	-	INOXDT 150	-	150	-	-	0,910	1	-	piece
-	-	INOXDT 200	-	200	-	-	1,270	1	-	piece
-	-	INOXDT 300	-	300	-	-	2,160	1	-	piece
-	-	INOXDT 400	-	400	-	-	2,950	1	-	piece
-	-	INOXDT 500	-	500	-	-	5,500	1	-	piece
-	-	INOXDT 600	-	600	-	-	7,200	1	-	piece

To fix with:

-	-	DCL	-	-	-	-	0,005	96	✓	piece
---	---	-----	---	---	---	---	-------	----	---	-------

Accessories

INOXKR

Cross-over


Slide over the cable trays

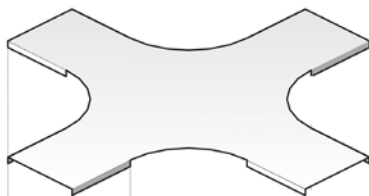
Radius	100 mm
Standard finish	Stainless Steel

1		Reference	Height	Width	Thickness	Length	kg/piece	Packaging	Stock	Unit
-	-	INOXKR 60*075	60	75	-	-	1,650	1	-	piece
-	-	INOXKR 60*100	60	100	-	-	1,750	1	-	piece
-	-	INOXKR 60*150	60	150	-	-	2,100	1	-	piece
-	-	INOXKR 60*200	60	200	-	-	2,300	1	-	piece
-	-	INOXKR 60*300	60	300	-	-	3,800	1	-	piece
-	-	INOXKR 60*400	60	400	-	-	4,700	1	-	piece
-	-	INOXKR 60*500	60	500	-	-	7,300	1	-	piece
-	-	INOXKR 60*600	60	600	-	-	8,800	1	-	piece

To fix with:

-	-	INOXVM 6*10	-	-	M6	10	0,010	250	✓	piece
---	---	-------------	---	---	----	----	-------	-----	---	-------

INOXDKR

Cover for cross-over


Radius	100 mm
Standard finish	Stainless Steel

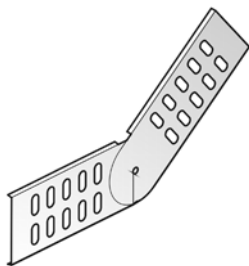
1		Reference	Height	Width	Thickness	Length	kg/piece	Packaging	Stock	Unit
-	-	INOXDKR 075	-	75	-	-	0,700	1	-	piece
-	-	INOXDKR 100	-	100	-	-	0,770	1	-	piece
-	-	INOXDKR 150	-	150	-	-	1,160	1	-	piece
-	-	INOXDKR 200	-	200	-	-	1,590	1	-	piece
-	-	INOXDKR 300	-	300	-	-	2,480	1	-	piece
-	-	INOXDKR 400	-	400	-	-	5,000	1	-	piece
-	-	INOXDKR 500	-	500	-	-	6,700	1	-	piece
-	-	INOXDKR 600	-	600	-	-	8,300	1	-	piece

To fix with:

-	-	DCL	-	-	-	-	0,005	96	✓	piece
---	---	-----	---	---	---	---	-------	----	---	-------

INOXDS 60

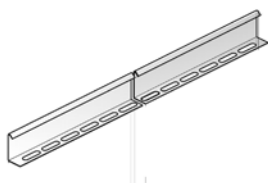
Hinged joint



		Standard finish						Stainless Steel					
1		Reference	Height	Width	Thickness	Length	kg/piece	Packaging	Stock	Unit			
-	-	INOXDS 60	60	-	-	-	0,130	50	-	piece			
To fix with:													
-	-	INOXVM 6*10	-	-	M6	10	0,010	250	✓	piece			

INOXSLOS 60

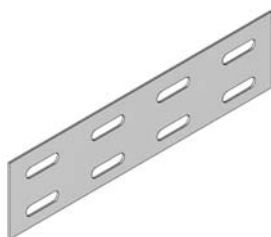
Division plate free



		Standard finish						Stainless Steel					
1		Reference	Height	Width	Thickness	Length	kg/m	Packaging	Stock	Unit			
-	-	INOXSLOS 60	60	-	-	3000	0,510	3	-	m			
To fix with:													
-	-	INOXVM 6*10	-	-	M6	10	0,010	250	✓	piece			

INOXV 60*200

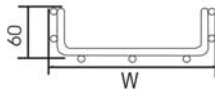
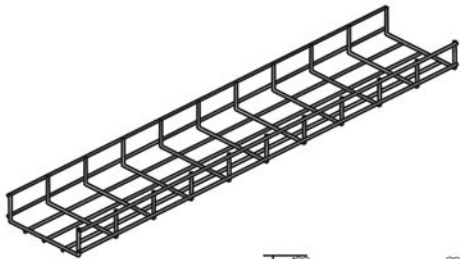
Jointing plate



		Standard finish						Stainless Steel					
1		Reference	Height	Width	Thickness	Length	kg/piece	Packaging	Stock	Unit			
-	-	INOXV 60*200	60	200	-	-	0,090	48	✓	piece			

INOXVF 60

Wire cable tray heavy duty



Screen : 50*100 mm
Thread : 5,00 mm

Length	3000 mm
Standard finish	Stainless Steel

1	Reference	Height	Width	Thickness	Length	kg/m	Packaging	Stock	Unit
-	INOXVF 60*050	60	50	-	3000	0,690	3	✓	m
-	INOXVF 60*100	60	100	-	3000	1,010	3	✓	m
-	INOXVF 60*150	60	150	-	3000	1,200	3	✓	m
-	INOXVF 60*200	60	200	-	3000	1,390	3	✓	m
-	INOXVF 60*300	60	300	-	3000	1,760	3	✓	m
-	INOXVF 60*400	60	400	-	3000	2,650	3	✓	m
-	INOXVF 60*500	60	500	-	3000	3,810	3	✓	m

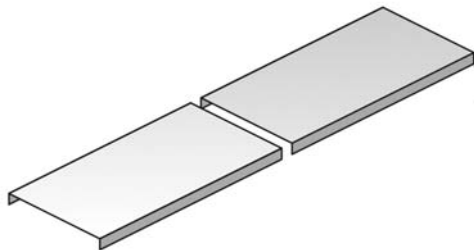
To fix with:

-	INOXKPVF	60	-	-	-	0,100	30	✓	piece
-	INOXVFK	-	-	-	-	0,020	50	✓	piece
-	INOXVFKS	60	-	-	-	0,270	30	✓	piece

More technical specifications for this product can be found at the end of this chapter.

INOXD

Universal cover



Length 3000 mm
Standard finish Stainless Steel

1		Reference	Height	Width	Thickness	Length	kg/m	Packaging	Stock	Unit			
-	-	INOXD 075	-	75	-	3000	0,500	3	-	m			
-	-	INOXD 100	-	100	-	3000	0,820	3	-	m			
-	-	INOXD 150	-	150	-	3000	1,170	3	-	m			
-	-	INOXD 200	-	200	-	3000	1,420	3	-	m			
-	-	INOXD 300	-	300	-	3000	2,100	3	-	m			
-	-	INOXD 400	-	400	-	3000	4,150	3	-	m			
-	-	INOXD 500	-	500	-	3000	5,000	3	-	m			
-	-	INOXD 600	-	600	-	3000	5,650	3	-	m			

To fix with:

-	-	DCLVF	-	-	-	-	0,005	100	✓	piece			
---	---	-------	---	---	---	---	-------	-----	---	-------	--	--	--

Cover clamp DCLVF to be ordered separately.
2 pieces per meter.

DCLVF

Captive lid clamp VF/VFL

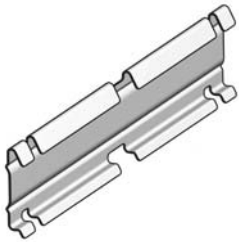


Standard finish Stainless Steel

1		Reference	Height	Width	Thickness	Length	kg/piece	Packaging	Stock	Unit			
-	-	DCLVF	-	-	-	-	0,005	100	✓	piece			

INOXKPVF

Jointing plate for wire cable tray



Standard finish									Stainless Steel				
1		Reference	Height	Width	Thickness	Length	kg/piece	Packaging	Stock	Unit			
-	-	INOXKPVF	60	-	-	-	0,100	30	✓	piece			

For a quick jointing without bolts and nuts. Can only be used with INOXVF 60.

INOXVFK

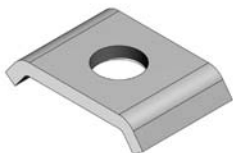
Jointing clamp for wire cable tray



Standard finish									Stainless Steel				
1		Reference	Height	Width	Thickness	Length	kg/piece	Packaging	Stock	Unit			
-	-	INOXVFK	-	-	-	-	0,020	50	✓	piece			

INOXVFKK 25

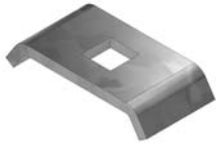
Jointing clamp for wire cable tray



Standard finish									Stainless Steel				
1		Reference	Height	Width	Thickness	Length	kg/piece	Packaging	Stock	Unit			
-	-	INOXVFKK 25	-	-	-	25	0,020	200	✓	piece			

INOXVFKG 30

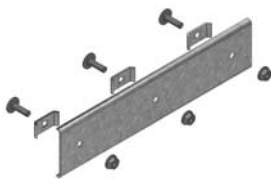
Jointing clamp for wire cable tray



Standard finish							Stainless Steel						
1		Reference	Height	Width	Thickness	Length	kg/piece	Packaging	Stock	Unit			
-	-	INOXVFKG 30	-	-	-	30	0,020	200	✓	piece			

INOXVFKS

Support joint for wire cable tray



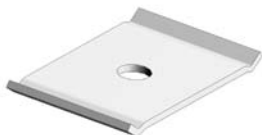
For maximum stability and safety

Standard finish							Stainless Steel						
1		Reference	Height	Width	Thickness	Length	kg/piece	Packaging	Stock	Unit			
-	-	INOXVFKS	60	-	-	-	0,270	30	✓	piece			

Toothed round head and nut included.

INOXVFCB

Central suspension bracket



Standard finish							Stainless Steel						
1		Reference	Height	Width	Thickness	Length	kg/set	Packaging	Stock	Unit			
-	-	INOXVFCB	-	-	-	-	0,070	24	✓	set			

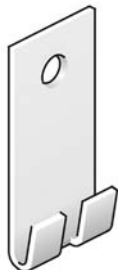
Per set (2 pieces)

Can be used for wire cable trays INOXVF 60*100 and INOXVF 60*150.

Threaded rod INOXTIM 6 or INOXTIM 8 and nut INOXM 6 or INOXM 8, should be ordered separately.

Accessories

INOXVFM

Wall bracket


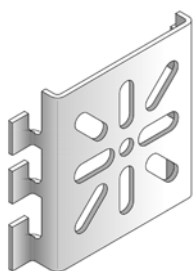
For fixation on the wall

Standard finish

Stainless Steel

1	Reference	Height	Width	Thickness	Length	kg/piece	Packaging	Stock	Unit			
-	- INOXVFM	-	-	-	-	0,030	48	✓	piece			

INOXVFMM

Wall and mounting bracket


For fixation of contact boxes and wall fixation

Standard finish

Stainless Steel

1	Reference	Height	Width	Thickness	Length	kg/piece	Packaging	Stock	Unit			
-	- INOXVFMM	60	-	-	-	0,080	20	✓	piece			

INOXVFO

Suspension piece


For threaded rod suspension INOXM 6 / INOXM 8

Standard finish

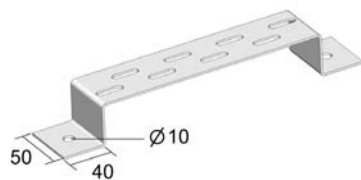
Stainless Steel

1	Reference	Height	Width	Thickness	Length	kg/piece	Packaging	Stock	Unit			
-	- INOXVFO	-	-	-	-	0,030	12	✓	piece			

Threaded rod INOXTIM 6 or INOXTIM 8 should be ordered separately.

INOXVMB

Floor and wall bracket



Suitable as floor-, wall-, and suspension bracket

Standard finish

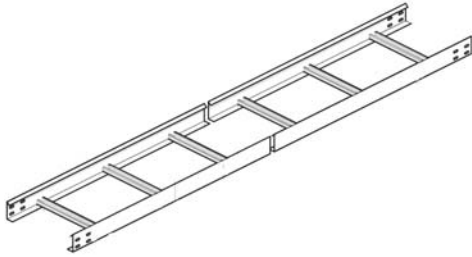
Stainless Steel

1		Reference	Height	Width	Thickness	Length	kg/piece	Packaging	Stock	Unit			
-	-	INOXVMB 100	40	100	2,00	-	0,190	30	✓	piece			
-	-	INOXVMB 150	40	150	2,00	-	0,220	30	✓	piece			
-	-	INOXVMB 200	40	200	2,00	-	0,260	30	✓	piece			
-	-	INOXVMB 300	40	300	2,00	-	0,330	30	✓	piece			
-	-	INOXVMB 400	40	400	2,00	-	0,390	30	✓	piece			

Wall bracket : to mount with INOXVFK.

INOXKL

Cable ladder



Side walls : L-profile
C-rungs

Useful inner height	45 mm
Rung distance	300 mm
Length	3000 mm
Standard finish	Stainless Steel

1		Reference	Height	Width	Thickness	Length	kg/m	Packaging	Stock	Unit			
-	-	INOXKL 60*200	60	200	-	3000	2,370	3	-	m			
-	-	INOXKL 60*300	60	300	-	3000	2,570	3	-	m			
-	-	INOXKL 60*400	60	400	-	3000	2,770	3	-	m			
-	-	INOXKL 60*500	60	500	-	3000	2,970	3	-	m			
-	-	INOXKL 60*600	60	600	-	3000	3,200	3	-	m			

To fix with:

-	-	INOXV 60*200	60	200	-	-	0,090	48	✓	piece			
---	---	--------------	----	-----	---	---	-------	----	---	-------	--	--	--

More technical specifications for this product can be found at the end of this chapter.

INOXKLB

Horizontal bend for INOXKL



Radius	600 mm
Standard finish	Stainless Steel

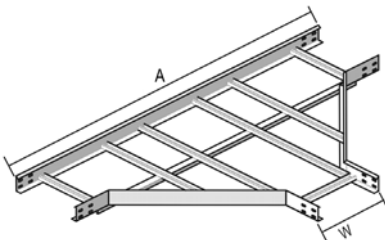
1		Reference	Height	Width	Thickness	Length	kg/piece	Packaging	Stock	Unit			
-	-	INOXKLB 60*200	60	200	-	-	2,900	1	-	piece			
-	-	INOXKLB 60*300	60	300	-	-	3,600	1	-	piece			
-	-	INOXKLB 60*400	60	400	-	-	4,200	1	-	piece			
-	-	INOXKLB 60*500	60	500	-	-	4,600	1	-	piece			
-	-	INOXKLB 60*600	60	600	-	-	5,050	1	-	piece			

To fix with:

-	-	INOXVM 6*10	-	-	M6	10	0,010	250	✓	piece			
-	-	INOXV 60*200	60	200	-	-	0,090	48	✓	piece			

INOXKLT

T-piece for INOXKL



W	200	300	400	500	600
A	1400	1500	1600	1700	1800

Radius	600 mm
Standard finish	Stainless Steel

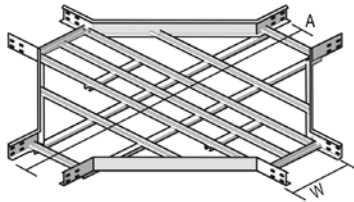
1		Reference	Height	Width	Thickness	Length	kg/piece	Packaging	Stock	Unit			
-	-	INOXKLT 60*200	60	200	-	-	5,400	1	-	piece			
-	-	INOXKLT 60*300	60	300	-	-	5,800	1	-	piece			
-	-	INOXKLT 60*400	60	400	-	-	6,500	1	-	piece			
-	-	INOXKLT 60*500	60	500	-	-	6,900	1	-	piece			
-	-	INOXKLT 60*600	60	600	-	-	8,600	1	-	piece			

To fix with:

-	-	INOXVM 6*10	-	-	M6	10	0,010	250	✓	piece			
-	-	INOXV 60*200	60	200	-	-	0,090	48	✓	piece			

Accessories

INOXKLK

Cross-over for INOXKL


W	200	300	400	500	600
A	1400	1500	1600	1700	1800

Radius	600 mm
Standard finish	Stainless Steel

1		Reference	Height	Width	Thickness	Length	kg/piece	Packaging	Stock	Unit
-	-	INOXKLK 60*200	60	200	-	-	8,200	1	-	piece
-	-	INOXKLK 60*300	60	300	-	-	8,900	1	-	piece
-	-	INOXKLK 60*400	60	400	-	-	9,800	1	-	piece
-	-	INOXKLK 60*500	60	500	-	-	10,800	1	-	piece
-	-	INOXKLK 60*600	60	600	-	-	11,400	1	-	piece

To fix with:

-	-	INOXVM 6*10	-	-	M6	10	0,010	250	✓	piece
-	-	INOXV 60*200	60	200	-	-	0,090	48	✓	piece

INOXKLVB

Flexible (Rising and Low) Bend INOXKL


Standard finish	Stainless Steel
-----------------	-----------------

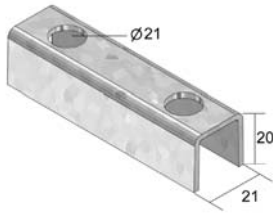
1		Reference	Height	Width	Thickness	Length	kg/piece	Packaging	Stock	Unit
-	-	INOXKLVB 60*200	60	200	-	-	3,700	1	-	piece
-	-	INOXKLVB 60*300	60	300	-	-	4,000	1	-	piece
-	-	INOXKLVB 60*400	60	400	-	-	4,200	1	-	piece
-	-	INOXKLVB 60*500	60	500	-	-	4,600	1	-	piece
-	-	INOXKLVB 60*600	60	600	-	-	4,900	1	-	piece

To fix with:

-	-	INOXVM 6*10	-	-	M6	10	0,010	250	✓	piece
-	-	INOXV 60*200	60	200	-	-	0,090	48	✓	piece

Accessories

INOXVOMEGA

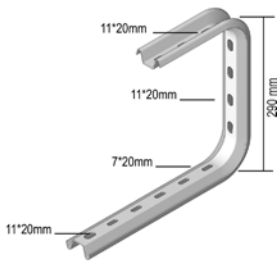
Connector piece


Standard finish	Stainless Steel

1	Reference	Height	Width	Thickness	Length	kg/piece	Packaging	Stock	Unit			
-	INOXVOMEGA	-	-	-	-	0,060	10	✓	piece			

For wall mounting 1 piece, for double mounting 2 pieces, back to back.

INOXCOMEGA 290

Open suspension bracket


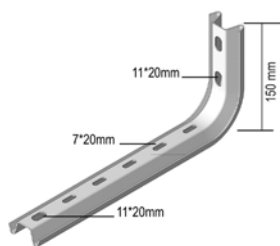
Standard finish	Stainless Steel

1	Reference	Height	Width	Thickness	Length	kg/piece	Packaging	Stock	Unit			
-	INOXCOMEGA 290*100	290	100	-	-	0,520	12	✓	piece			
-	INOXCOMEGA 290*150	290	150	-	-	0,560	12	✓	piece			
-	INOXCOMEGA 290*200	290	200	-	-	0,620	12	✓	piece			
-	INOXCOMEGA 290*300	290	300	-	-	0,820	6	✓	piece			
-	INOXCOMEGA 290*400	290	400	-	-	0,930	6	✓	piece			

Useful for direct mounting to the ceiling or with threaded INOXTIM 8 or INOXTIM 10. Fixation of the cable tray by INOXVM 6*20. Use the INOXVOMEGA to avoid compression of the profile.

INOXLOMEGA 150

Bracket / Ceiling profile



Standard finish

Stainless Steel

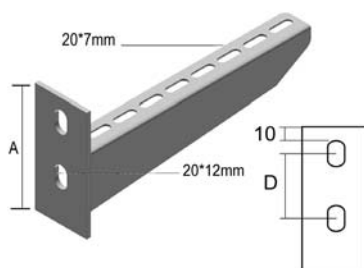
1	Reference	Height	Width	Thickness	Length	kg/piece	Packaging	Stock	Unit
-	INOXLOMEGA 150*100	150	100	-	-	0,300	12	✓	piece
-	INOXLOMEGA 150*150	150	150	-	-	0,320	12	✓	piece
-	INOXLOMEGA 150*200	150	200	-	-	0,340	12	✓	piece
-	INOXLOMEGA 150*300	150	300	-	-	0,490	6	✓	piece
-	INOXLOMEGA 150*400	150	400	-	-	0,540	6	✓	piece
-	INOXLOMEGA 150*500	150	500	-	-	0,640	6	✓	piece
-	INOXLOMEGA 150*600	150	600	-	-	0,770	6	✓	piece

Use the INOXVOMEGA to avoid compression of the profiles.

INOXWK

Joined bracket

For direct fixation on the wall and also for fixation on ceiling profiles



Width	Max. load (in daN)	A	D
100	360	106,5	46,5
150	300	112	52
200	240	116	56
300	250	125	65
400	260	134	74
500	220	142,5	82,5
600	180	150	90

Standard finish

Stainless Steel

1	Reference	Height	Width	Thickness	Length	kg/piece	Packaging	Stock	Unit
-	INOXWK 100	-	100	-	-	0,300	24	✓	piece
-	INOXWK 150	-	150	-	-	0,360	24	✓	piece
-	INOXWK 200	-	200	-	-	0,430	24	✓	piece
-	INOXWK 300	-	300	-	-	0,730	12	✓	piece
-	INOXWK 400	-	400	-	-	0,880	12	✓	piece
-	INOXWK 500	-	500	-	-	1,300	6	✓	piece
-	INOXWK 600	-	600	-	-	1,600	6	✓	piece

For fixation on the ceiling profile, the necessary fixation set is to be ordered separately : sliding nut INOXGM 41 M 10 and bolt INOXB 10*20. Max. load (in daN): Uniformly distributed load (UDL) over complete width of cantilever brackets.

INOXHSLE

Single ceiling profile



For fixation of brackets on one side.
Profile : INOXMP 41*21
Welded head plate : 120 x 120 mm

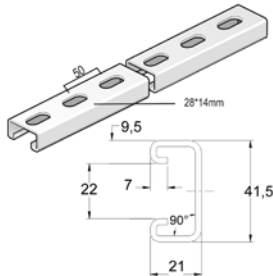
Length	200 - 1200 mm
Standard finish	Stainless Steel

1	Reference	Height	Width	Thickness	Length	kg/piece	Packaging	Stock	Unit
-	INOXHSLE 200	-	-	-	200	0,740	1	✓	piece
-	INOXHSLE 300	-	-	-	300	0,850	1	✓	piece
-	INOXHSLE 400	-	-	-	400	1,010	1	✓	piece
-	INOXHSLE 500	-	-	-	500	1,130	1	✓	piece
-	INOXHSLE 600	-	-	-	600	1,230	1	✓	piece
-	INOXHSLE 800	-	-	-	800	1,450	1	✓	piece
-	INOXHSLE 1000	-	-	-	1000	1,750	1	✓	piece
-	INOXHSLE 1200	-	-	-	1200	1,950	1	✓	piece

Use sliding nut INOXGM 41 M 10 and hexagonal bolt INOXB 10*20.

INOXMP 41*21*2.50 SL

Assembly profile

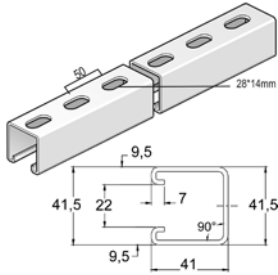


Length	6000 mm
Standard finish	Stainless Steel

1	Reference	Height	Width	Thickness	Length	kg/m	Packaging	Stock	Unit
-	INOXMP 41*21*2.50*6 SL	41	21	2,50	6000	1,850	6	✓	m

INOXMP 41*41*2.50 SL

Assembly profile



Length	6000 mm
Standard finish	Stainless Steel

1	Reference	Height	Width	Thickness	Length	kg/m	Packaging	Stock	Unit			
-	-	INOXMP 41*41*2.50*6 SL	41	41	2,50	6000	2,700	6	✓	m		

INOXTIM

Threaded rod (DIN 975)



Length	2000 mm
Standard finish	Stainless Steel

1	Reference	Height	Width	Thickness	Length	kg/m	Packaging	Stock	Unit			
-	-	INOXTIM 6	-	-	M6	2000	0,170	200	✓	m		
-	-	INOXTIM 8	-	-	M8	2000	0,310	200	✓	m		
-	-	INOXTIM 10	-	-	M10	2000	0,460	200	✓	m		

INOXVM

Toothed round head bolt/nut (DIN 603)



Standard finish	Stainless Steel
-----------------	-----------------

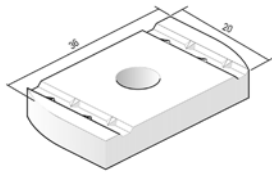
1	Reference	Height	Width	Thickness	Length	kg/piece	Packaging	Stock	Unit			
-	-	INOXVM 6*10	-	-	M6	10	0,010	250	✓	piece		
-	-	INOXVM 6*20	-	-	M6	20	0,020	250	✓	piece		

To order per 250 pieces.

Accessories

INOXGM

Sliding nut GM41/M12



For fixation of the brackets on the ceiling profiles.
To be used for profiles INOXMP 41*21 and INOXMP 41*41.

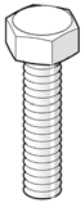
Standard finish

Stainless Steel

1	Reference	Height	Width	Thickness	Length	kg/piece	Packaging	Stock	Unit			
-	INOXGM 41 M 6	-	-	M6	-	0,030	48	✓	piece			
-	INOXGM 41 M 8	-	-	M8	-	0,030	48	✓	piece			
-	INOXGM 41 M 10	-	-	M10	-	0,040	48	✓	piece			

INOXB

Bolt (DIN 933)



Standard finish

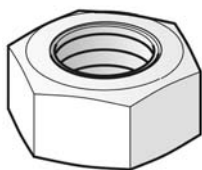
Stainless Steel

1	Reference	Height	Width	Thickness	Length	kg/piece	Packaging	Stock	Unit			
-	INOXB 6*20	-	-	M6	20	0,010	250	✓	piece			
-	INOXB 6*30	-	-	M6	30	0,010	250	✓	piece			
-	INOXB 8*20	-	-	M8	20	0,010	250	✓	piece			
-	INOXB 8*30	-	-	M8	30	0,020	250	✓	piece			
-	INOXB 10*20	-	-	M10	20	0,020	250	✓	piece			
-	INOXB 10*30	-	-	M10	30	0,030	250	✓	piece			

To order per 250 pieces.

INOXM

Nut (DIN 934)

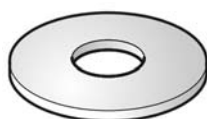


		Standard finish					Stainless Steel						
1		Reference	Height	Width	Thickness	Length	kg/piece	Packaging	Stock	Unit			
-	-	INOXM 6	-	-	M6	-	0,010	250	✓	piece			
-	-	INOXM 8	-	-	M8	-	0,010	250	✓	piece			
-	-	INOXM 10	-	-	M10	-	0,010	250	✓	piece			

To order per 250 pieces.

INOXCRO

Flat giant washer (DIN 9021)

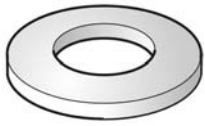


		Standard finish					Stainless Steel						
1		Reference	Height	Width	Thickness	Length	kg/piece	Packaging	Stock	Unit			
-	-	INOXCRO 6	-	-	M6	-	0,010	250	✓	piece			
-	-	INOXCRO 8	-	-	M8	-	0,010	250	✓	piece			
-	-	INOXCRO 10	-	-	M10	-	0,010	250	✓	piece			

To order per 250 pieces.

INOXRO

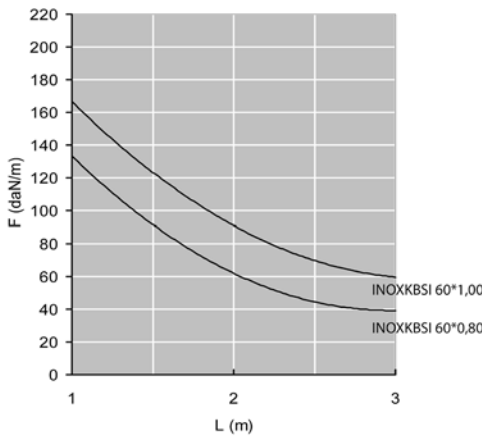
Giant washer (DIN 125-1 A)



		Standard finish						Stainless Steel					
1		Reference	Height	Width	Thickness	Length	kg/piece	Packaging	Stock	Unit			
-	-	INOXRO 6	-	-	M6	-	0,010	250	✓	piece			
-	-	INOXRO 8	-	-	M8	-	0,010	250	✓	piece			
-	-	INOXRO 10	-	-	M10	-	0,010	250	✓	piece			

To order per 250 pieces.

INOXKBSI 60



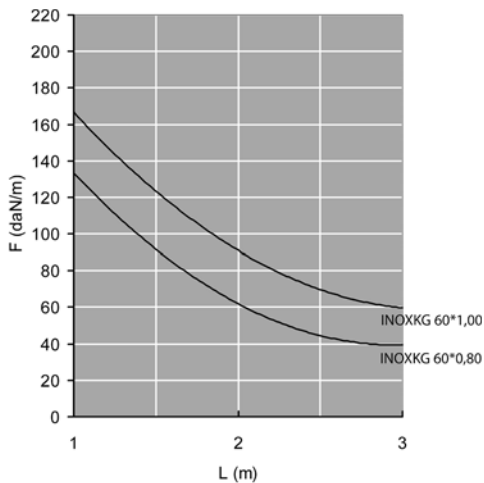
LOAD DIAGRAM

Graph valid for INOXKBSI 60. This diagram illustrates the permissible uniformly distributed loads applied to multiple supports. They comply with IEC 61537 par 10.3.3 test type III with connection to 1/5 of the span.

F = max. admissible load (daN/m)
L = support distance (m)

Max. deflection (m) = L/100

INOXKG 60



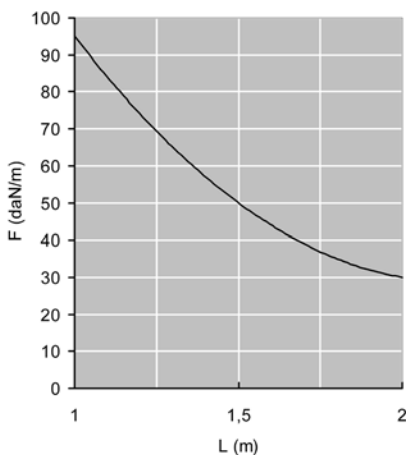
LOAD DIAGRAM

Graph valid for INOXKBSI 60. This diagram illustrates the permissible uniformly distributed loads applied to multiple supports. They comply with IEC 61537 par 10.3.3 test type III with connection to 1/5 of the span.

F = max. admissible load (daN/m)
L = support distance (m)

Max. deflection (m) = L/100

INOXVF 60



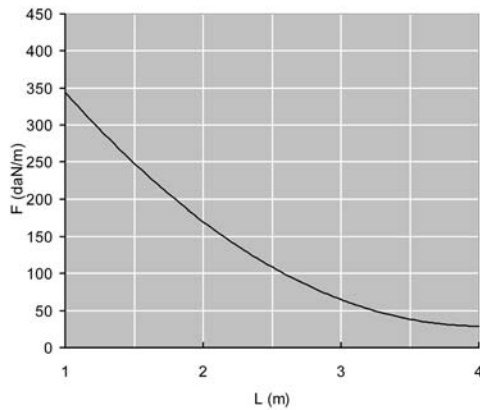
LOAD DIAGRAM

Graph valid for INOXKBSI 60. This diagram illustrates the permissible uniformly distributed loads applied to multiple supports. They comply with IEC 61537 par 10.3.3 test type III with connection to 1/5 of the span.

F = max. admissible load (daN/m)
L = support distance (m)

Max. deflection (m) = L/100

INOXKL

**LOAD DIAGRAM**

Graph valid for INOXKBSI 60. This diagram illustrates the permissible uniformly distributed loads applied to multiple supports. They comply with IEC 61537 par 10.3.3 test type III with connection to 1/5 of the span.

F = max. admissible load (daN/m)

L = support distance (m)

Max. deflection (m) = $L/100$

