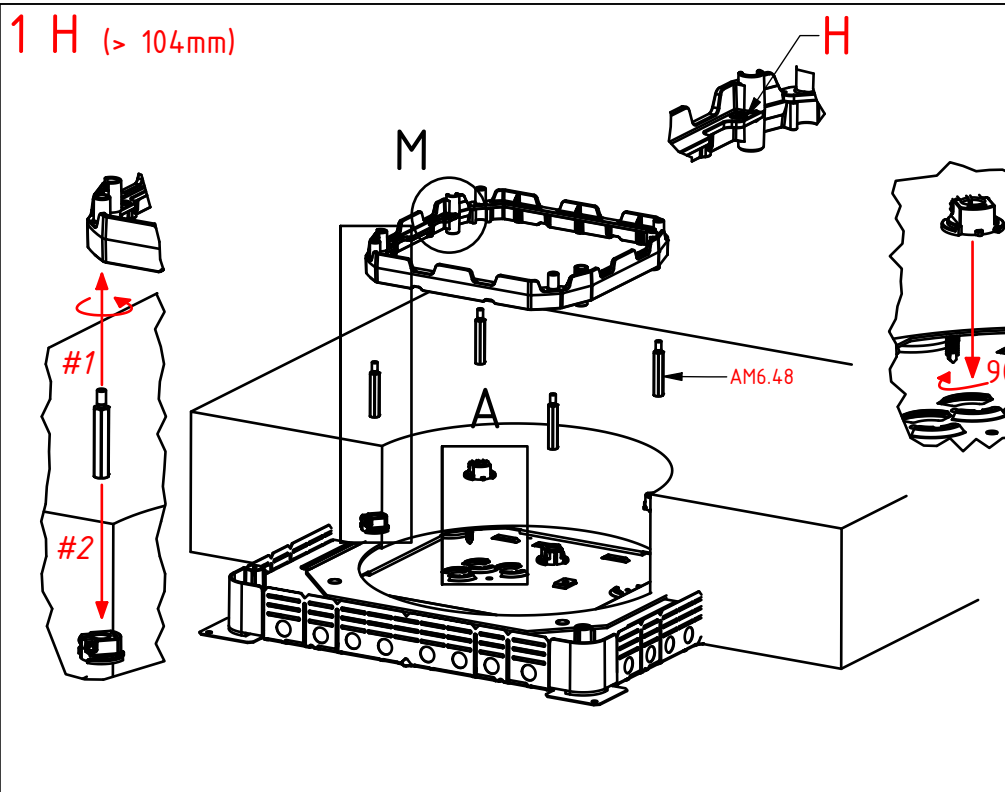
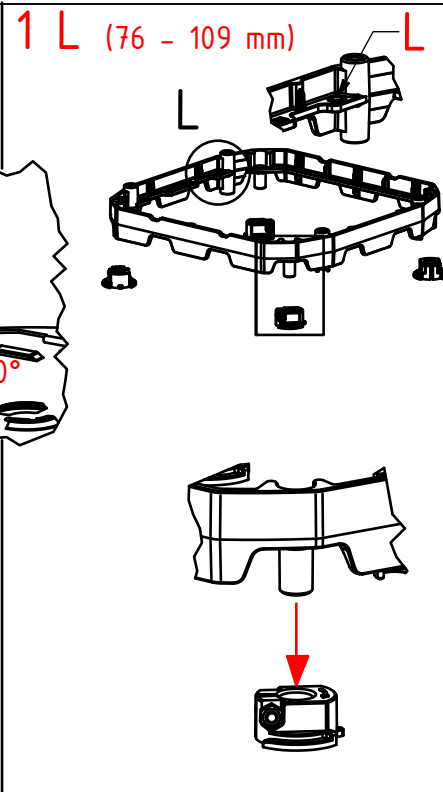


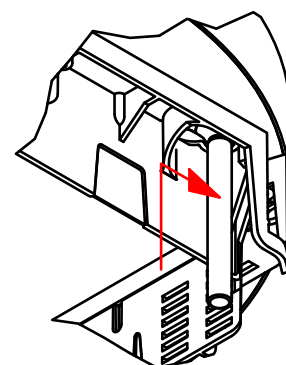
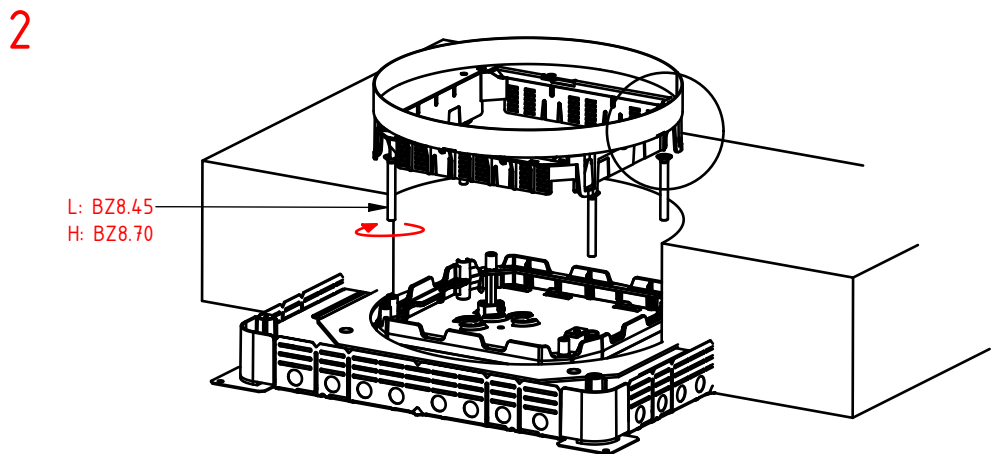
1 H (> 104mm)



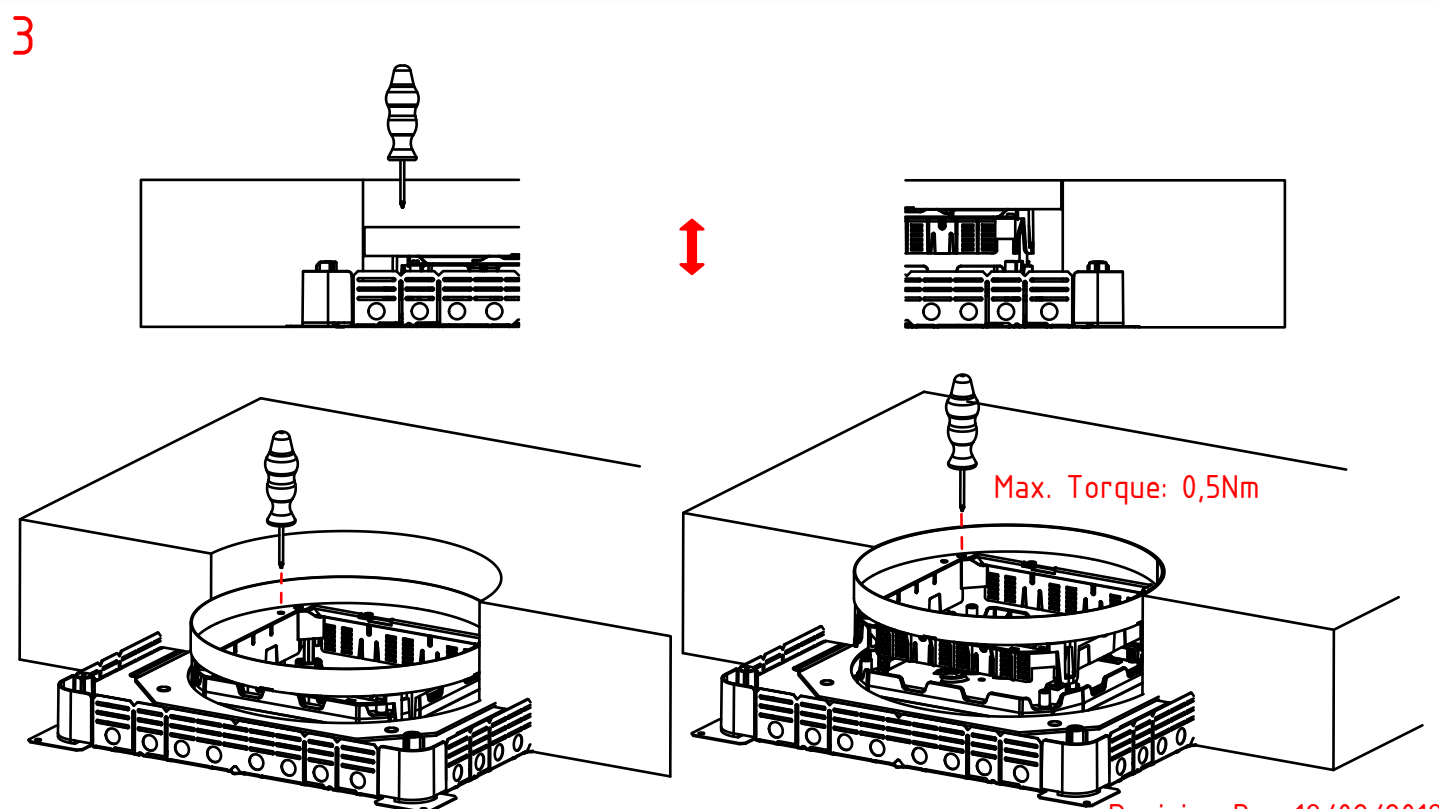
1 L (76 - 109 mm)



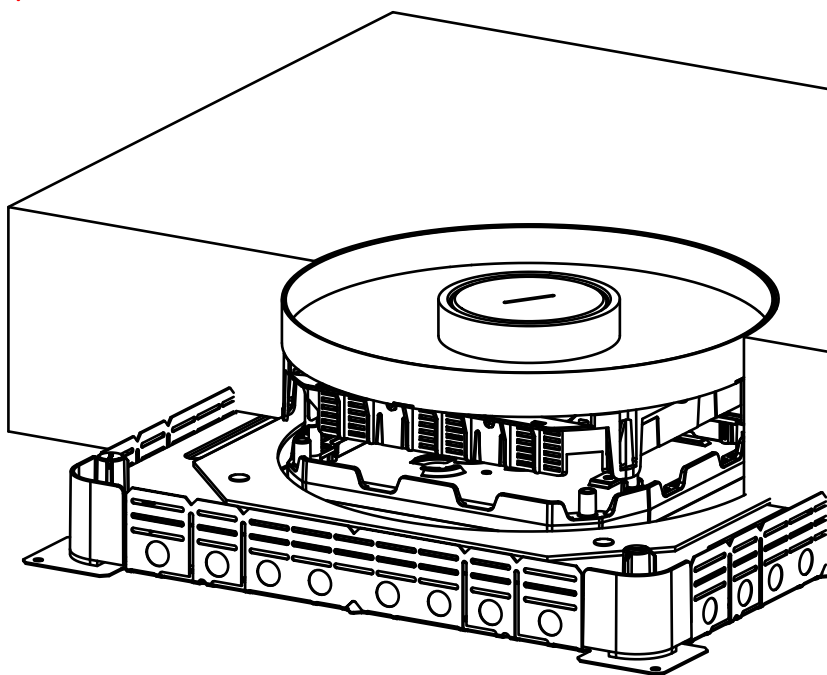
2



3



Revision B - 19/02/2019



DRITWD3

1. Installing the supporting frame

1H: Normal installation (for finished floor level of 104mm and up)

- * Make sure the 'H' is visible on top of the supporting frame. If not, turn 180° around horizontal axis
- * Insert 4 support feet into the bottom plate of the NEO floorbox and secure them by turning 90°
- * Insert 4 included distance nuts AM6.48 into the corners (for higher finished floor level, add AM6.48 or AM6.96)
- * Insert distance nuts into support feet and secure them by fastening the included bolts of the support feet.

1L: Low installation (for finished floor level of 76 – 109 mm)

- * Make sure the 'L' is visible on top of the supporting frame. If not, turn 180° around horizontal axis
- * Insert 4 support feet into the bottom plate of the NEO floorbox and secure them by turning 90°
- * Insert supporting frame tubes directly into the support feet and secure by fastening included bolts

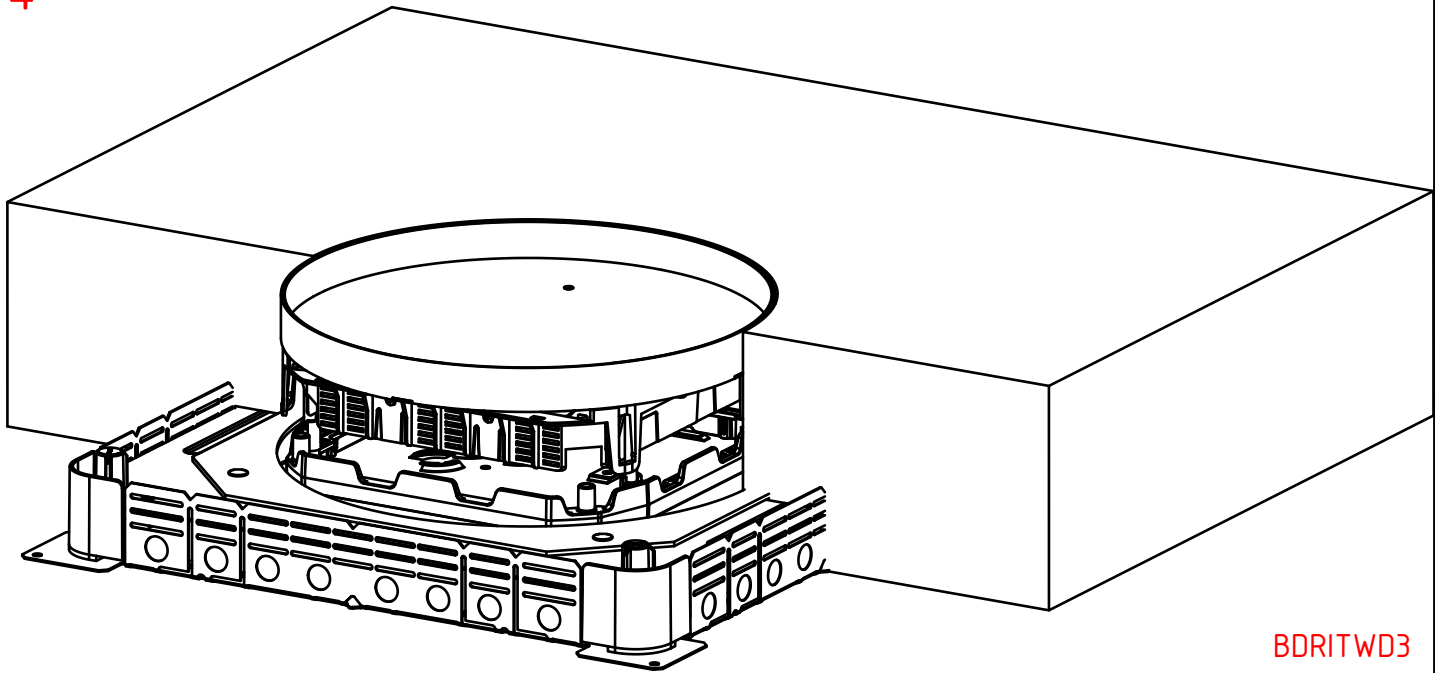
2: Installation of the stainless steel cover frame.

- * Remove cover from cover frame for easier access while installing
- * Insert the 4 bolts underneath the cover frame. Secured when clicked
 - for finished floor levels up to 109 mm: use included bolts BZ8.45
 - for finished floor levels of 104 and up, use included bolts BZ8.70
- * Mount cover onto support frame with the 4 installed bolts

3: Levelling the cover to finished floor level.

- * Level the supporting frame up to finished floor level by turning the 4 accessible bolts BZ8.45 or BZ8.70
- * Secure by fastening the 4 screws next to the bolts

4: Reinstallation of the cover.



BDRITWD3

1. Installing the supporting frame

1H: Normal installation (for finished floor level of 104mm and up)

- * Make sure the 'H' is visible on top of the supporting frame. If not, turn 180° around horizontal axis
- * Insert 4 support feet into the bottom plate of the NEO floorbox and secure them by turning 90°
- * Insert 4 included distance nuts AM6.48 into the corners (for higher finished floor level, add AM6.48 or AM6.96)
- * Insert distance nuts into support feet and secure them by fastening the included bolts of the support feet.

1L: Low installation (for finished floor level of 76 – 109 mm)

- * Make sure the 'L' is visible on top of the supporting frame. If not, turn 180° around horizontal axis
- * Insert 4 support feet into the bottom plate of the NEO floorbox and secure them by turning 90°
- * Insert supporting frame tubes directly into the support feet and secure by fastening included bolts

2: Installation of the stainless steel cover frame.

- * Remove cover from cover frame for easier access while installing
- * Insert the 4 bolts underneath the cover frame. Secured when clicked
 - for finished floor levels up to 109 mm: use included bolts BZ8.45
 - for finished floor levels of 104 and up, use included bolts BZ8.70
- * Mount cover onto support frame with the 4 installed bolts

3: Levelling the cover to finished floor level.

- * Level the supporting frame up to finished floor level by turning the 4 accessible bolts BZ8.45 or BZ8.70
- * Secure by fastening the 4 screws next to the bolts

4: Reinstallation of the cover.