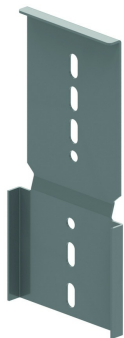


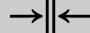
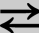



KLWAHV
Aufhängeklaue vertikal für KLW



In die Enden der Längsholme schieben (umklammernd) und festschrauben

Referenz	Oberfläche	 mm	 mm	 mm	 mm	kg/stk		Einheit
KLWAHV	-	169	27		340	1,370	2	STK
ZMKLWAHV	DF	170	27	3,0	340	1,370	2	STK

Min. Anzahl Schrauben und Muttern: 3 Stück.

Legenden Oberfläche
- DF = Defender

Zu befestigen mit:



Selbstsichernde
Schraube (DIN
603)
RBK

Verzahnte
Flanschnutter
(DIN 6923)
RM