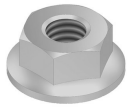


RM

Verzahnte Flanschmutter (DIN 6923)



Referenz	D	M	S	Dc
RM6	6	6	10	14.2
RM8	8	8	13	17.9
RM10	10	10	15	21.8
RM12	12	12	18	26

Referenz	↕ mm	↔ mm	→ ← mm	↔ mm	kg/stk	📦	Einheit
RM6			M6		0,003	100	STK
RM8			M8		0,007	100	STK
RM10			M10		0,013	100	STK
RM12			M12		0,021	100	STK

