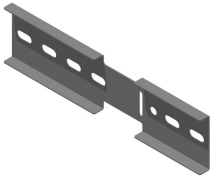


KLM125DSH

Horizontal hinged joiner for KLM125



Slides in the C-opening of the sidewalls
Premounted

Standard finish

Pre-galvanised

Optional finish

| HD | Reference | ↕ mm | ↔ mm | → ← mm | ↔ mm | kg/stk | 📦 | Stock | Unit |
|----|--------------------|---------|---------|------------|---------|--------|---|-------|------|
| - | KLM125DSH | 96 | 25 | | 330 | 0,698 | 2 | | STK |
| - | ZMKLM125DSH | 96 | 25 | | 330 | 0,698 | 2 | | STK |

Fix with:



Minimum number bolts and nuts: 4 pieces.

Round head
square neck bolt
(DIN 603)
RBK

Flange nut (DIN
6923)
RM