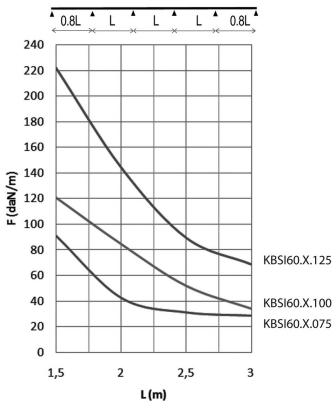
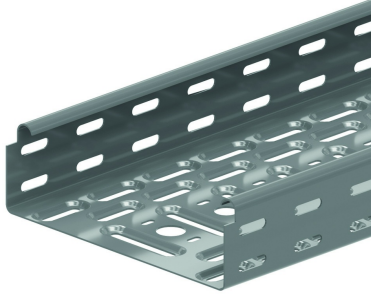


KBSI60

Cable tray with interlocking ends

Interlocking ends
Alternative perforations
Return flanges



Reference	↑ mm	↔ mm	→ ← mm	↔↔ mm	kg/m	📦	Unit
KBSI60.075.125	60	75	1,25	3000	1,750	60	M
KBSI60.100.125	60	100	1,25	3000	1,950	60	M
KBSI60.150.125	60	150	1,25	3000	2,360	30	M
KBSI60.200.125	60	200	1,25	3000	2,770	30	M
KBSI60.300.125	60	300	1,25	3000	3,580	30	M
KBSI60.400.125	60	400	1,25	3000	4,400	30	M
KBSI60.500.125	60	500	1,25	3000	5,210	30	M
KBSI60.600.125	60	600	1,25	3000	6,030	30	M

LOAD DIAGRAM

This diagram illustrates the permissible uniformly distributed loads applied to multiple supports. They comply with IEC 61537 with connection in the centre of the span and the end span = 0,8 x the span.

F = max. admissible load (daN/m)

L = support distance (m)

Max. deflection (m) = L/100

Other lengths on request: min. 2 m / max. 6 m per steps of 100 mm.

Fix with:



Toothed round head bolt / flange nut
VM

Fast locking for KBSI
KBV

