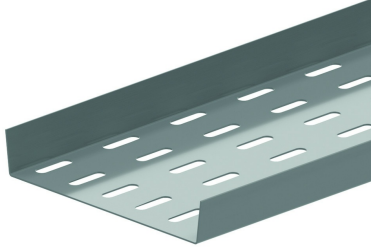


BP
Floor plate



Reference	Finish	↑ mm	↔ mm	→ ← mm	↔ mm	kg/m	📦	Unit
BP200	SZ	25	141		3000	1,560	3	M
BP300	SZ	25	241		3000	2,400	3	M
BP400	SZ	25	341		3000	3,230	3	M
BP500	SZ	25	441		3000	4,030	3	M
BP600	SZ	25	541		3000	4,860	3	M

Legend finish
- SZ = Sendzimir