

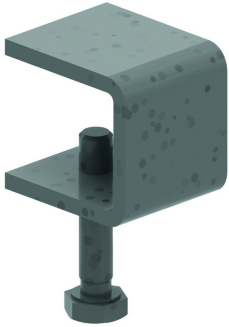
# DKLMZWVB45

## Cover for lowering elbow ladder bend 45°



Radius: 600 mm

Fix with:



Cover clamp  
ZMDKIG

Reference	Finish	↕ mm	↔ mm	→  ← mm	↔ mm	kg/stk	📦	Unit
<b>DKLM100VB45.150</b>	SZ	15	156	0,9		0,813	1	STK
<b>DKLM100VB45.200</b>	SZ	15	206	0,9		1,088	1	STK
<b>DKLM100VB45.300</b>	SZ	15	306	0,9		1,637	1	STK
<b>DKLM100VB45.400</b>	SZ	15	406	0,9		2,186	1	STK
<b>DKLM100VB45.450</b>	SZ	15	456	0,9		2,461	1	STK
<b>DKLM100VB45.500</b>	SZ	15	506	0,9		2,735	1	STK
<b>DKLM100VB45.600</b>	SZ	15	606	0,9		3,284	1	STK
<b>DKLM100VB45.750</b>	SZ	15	756	1,25		5,785	1	STK
<b>DKLM100VB45.800</b>	SZ	15	806	1,25		6,086	1	STK
<b>DKLM100VB45.900</b>	SZ	15	906	1,25		6,848	1	STK
<b>DKLM100VB45.1000</b>	SZ	15	1006	1,25		7,611	1	STK
<b>ZMDKLM100VB45.150</b>	DF	15	156	0,9		0,813	1	STK
<b>ZMDKLM100VB45.200</b>	DF	15	206	0,9		1,088	1	STK
<b>ZMDKLM100VB45.300</b>	DF	15	306	0,9		1,637	1	STK
<b>ZMDKLM100VB45.400</b>	DF	15	406	0,9		2,186	1	STK
<b>ZMDKLM100VB45.450</b>	DF	15	456	0,9		2,461	1	STK
<b>ZMDKLM100VB45.500</b>	DF	15	506	0,9		2,735	1	STK
<b>ZMDKLM100VB45.600</b>	DF	15	606	0,9		3,284	1	STK
<b>ZMDKLM100VB45.750</b>	DF	15	756	1,25		5,785	1	STK
<b>ZMDKLM100VB45.800</b>	DF	15	806	1,25		6,086	1	STK
<b>ZMDKLM100VB45.900</b>	DF	15	906	1,25		6,848	1	STK
<b>ZMDKLM100VB45.1000</b>	DF	15	1006	1,25		7,611	1	STK

Cover for ladder accessories as standard Cover can be used for Ladders KLM100-KLM125-KLW-KLZ

**Legend finish**

- SZ = Sendzimir
- DF = Defender