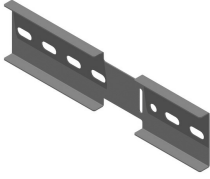


KLM125DSH

Horizontal hinged joiner for KLM125



Slides in the C-opening of the sidewalls
Premounted

Reference	Finish	↑ mm	↔ mm	→ ← mm	↔ mm	kg/stk	📦	Unit
KLM125DSH	SZ	96	25		330	0,698	2	STK
ZMKLM125DSH	DF	96	25		330	0,698	2	STK

Fix with:



Minimum number bolts and nuts: 4 pieces.

Legend finish
- SZ = Sendzimir
- DF = Defender

Round head
square neck bolt
(DIN 603)
RBK

Flange nut (DIN
6923)
RM