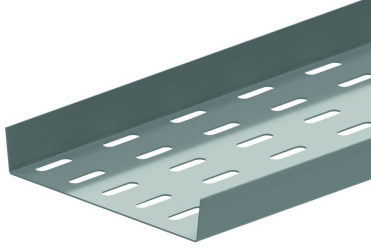
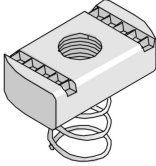


**BP**  
**Floor plate**



Reference	Finish	↑ mm	↔ mm	→  ← mm	↔ mm	kg/m	📦	Unit
<b>BP200</b>	SZ	25	141		3000	1,560	3	M
<b>BP300</b>	SZ	25	241		3000	2,400	3	M
<b>BP400</b>	SZ	25	341		3000	3,230	3	M
<b>BP500</b>	SZ	25	441		3000	4,030	3	M
<b>BP600</b>	SZ	25	541		3000	4,860	3	M
<b>ZMBP200</b>	DF	25	141		3000	1,366	3	M
<b>ZMBP300</b>	DF	25	241		3000	2,048	3	M
<b>ZMBP400</b>	DF	25	341		3000	2,730	3	M
<b>ZMBP500</b>	DF	25	441		3000	3,411	3	M
<b>ZMBP600</b>	DF	25	451		3000	4,093	3	M

**Fix with:**



Toothed round  
head bolt  
RB

Sliding nut for  
supporting profile  
PNS

**Legend finish**  
- SZ = Sendzimir  
- DF = Defender