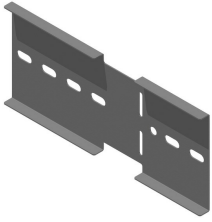


KLWDSH

Horizontal hinged joiner for KLW



Premounted with B10.20

Reference	Finish	↕ mm	↔ mm	→ ← mm	↔ mm	kg/stk	📦	Unit
KLWDSH	SZ	169	25		330	1,165	2	STK
ZMKLWDSH	DF	169	25		330	1,165	2	STK
HDKLWDSH	HD	172	25	2,0	400	1,165	2	STK

Fix with:



Round head
square neck bolt
(DIN 603)
RBK

Flange nut (DIN
6923)
RM

Minimum number bolts and nuts: 4 pieces.

Legend finish

- SZ = Sendzimir
- DF = Defender
- HD =