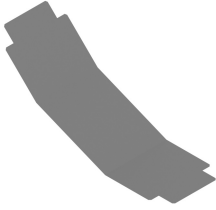


DKLMZWSB45

Cover for rising elbow ladder bend 45°



Fix with:



Cover clamp
ZMDKIG

Radius: 600 mm

Reference	Finish	↑ mm	↔ mm	→ ← mm	↔ mm	kg/stk	Unit	Unit
DKLMZWSB45.150	SZ	15	156	0,9		0,674	1	STK
DKLMZWSB45.200	SZ	15	206	0,9		0,903	1	STK
DKLMZWSB45.300	SZ	15	306	0,9		1,363	1	STK
DKLMZWSB45.400	SZ	15	406	0,9		1,822	1	STK
DKLMZWSB45.450	SZ	15	456	0,9		2,052	1	STK
DKLMZWSB45.500	SZ	15	506	0,9		2,282	1	STK
DKLMZWSB45.600	SZ	15	606	0,9		2,741	1	STK
DKLMZWSB45.750	SZ	15	756	1,25		4,766	1	STK
DKLMZWSB45.800	SZ	15	806	1,25		5,085	1	STK
DKLMZWSB45.900	SZ	15	906	1,25		5,723	1	STK
DKLMZWSB45.1000	SZ	15	1006	1,25		6,361	1	STK
ZMDKLMZWSB45.150	DF	15	156	0,9		0,674	1	STK
ZMDKLMZWSB45.200	DF	15	206	0,9		0,903	1	STK
ZMDKLMZWSB45.300	DF	15	306	0,9		1,363	1	STK
ZMDKLMZWSB45.400	DF	15	406	0,9		1,822	1	STK
ZMDKLMZWSB45.450	DF	15	456	0,9		2,052	1	STK
ZMDKLMZWSB45.500	DF	15	506	0,9		2,282	1	STK
ZMDKLMZWSB45.600	DF	15	606	0,9		2,741	1	STK
ZMDKLMZWSB45.750	DF	15	756	1,25		4,766	1	STK
ZMDKLMZWSB45.800	DF	15	806	1,25		5,085	1	STK
ZMDKLMZWSB45.900	DF	15	906	1,25		5,723	1	STK
ZMDKLMZWSB45.1000	DF	15	1006	1,25		6,361	1	STK

Cover for ladder accessories as standard Cover can be used for Ladders KLM100-KLM125-KLW-KLZ

Legend finish

- SZ = Sendzimir
- DF = Defender