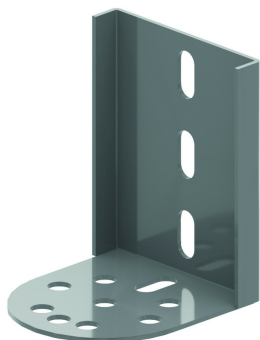


# KLZVST

## Floor Support for KLZ



| Reference     | ↕<br>mm | ↔<br>mm | →  ←<br>mm | ↔<br>mm | kg/stk | 📦 | Unit |
|---------------|---------|---------|------------|---------|--------|---|------|
| <b>KLZVST</b> | 120     | 125     |            | 150     | 0,770  | 2 | STK  |

Minimum number bolts and nuts: 2 pieces.

### Fix with:



Round head  
square neck bolt  
(DIN 603)  
RBK

Flange nut (DIN  
6923)  
RM