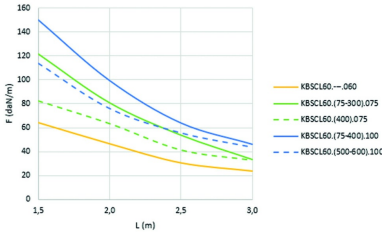
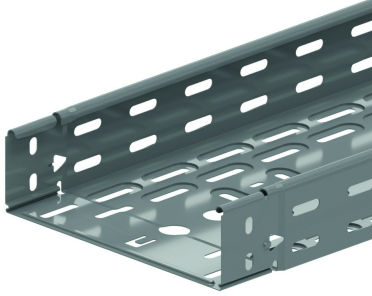


# KBSCCL60

## Cable Tray Clickable

Clicking ends  
Alternative perforations  
Return flanges



	1,5	2,0	2,5	3,0
KBSCCL60.-.-.060	64,4	46,5	30,4	23,5
KBSCCL60.(75-300).075	121,9	81,1	54,0	33,7
KBSCCL60.(400).075	82,5	63,6	41,6	33,1
KBSCCL60.(75-400).100	149,9	99,3	63,9	46,1
KBSCCL60.(500-600).100	113,7	76,1	55,8	43,9

Reference	Finish	↑ mm	↔ mm	→  ← mm	↔↔ mm	kg/m	📦	Unit
<b>KBSCCL60.075.075</b>	SZ	60	75	0,75	3000	1,032	60	M
<b>KBSCCL60.075.100</b>	SZ	60	75	1,00	3000	1,324	60	M
<b>KBSCCL60.100.060</b>	SZ	60	100	0,60	3000	1,033	60	M
<b>KBSCCL60.100.075</b>	SZ	60	100	0,75	3000	1,200	60	M
<b>KBSCCL60.100.100</b>	SZ	60	100	1,00	3000	1,535	60	M
<b>KBSCCL60.150.075</b>	SZ	60	150	0,75	3000	1,462	30	M
<b>KBSCCL60.150.100</b>	SZ	60	150	1,00	3000	1,869	30	M
<b>KBSCCL60.200.060</b>	SZ	60	200	0,60	3000	1,487	30	M
<b>KBSCCL60.200.075</b>	SZ	60	200	0,75	3000	1,723	30	M
<b>KBSCCL60.200.100</b>	SZ	60	200	1,00	3000	2,199	30	M
<b>KBSCCL60.300.060</b>	SZ	60	300	0,60	3000	1,924	30	M
<b>KBSCCL60.300.075</b>	SZ	60	300	0,75	3000	2,234	30	M
<b>KBSCCL60.300.100</b>	SZ	60	300	1,00	3000	2,853	30	M
<b>KBSCCL60.400.075</b>	SZ	60	400	0,75	3000	2,779	30	M
<b>KBSCCL60.400.100</b>	SZ	60	400	1,00	3000	3,545	30	M
<b>KBSCCL60.500.100</b>	SZ	60	500	1,00	3000	4,170	30	M
<b>KBSCCL60.600.100</b>	SZ	60	600	1,00	3000	4,820	30	M
<b>ZMKBSCL60.075.075</b>	DF	60	75	0,75	3000	1,032	60	M
<b>ZMKBSCL60.075.100</b>	DF	60	75	1,00	3000	1,324	60	M
<b>ZMKBSCL60.100.075</b>	DF	60	100	0,75	3000	1,200	60	M
<b>ZMKBSCL60.100.100</b>	DF	60	100	1,00	3000	1,535	60	M
<b>ZMKBSCL60.150.075</b>	DF	60	150	0,75	3000	1,462	30	M
<b>ZMKBSCL60.150.100</b>	DF	60	150	1,00	3000	1,869	30	M
<b>ZMKBSCL60.200.075</b>	DF	60	200	0,75	3000	1,723	30	M
<b>ZMKBSCL60.200.100</b>	DF	60	200	1,00	3000	2,199	30	M
<b>ZMKBSCL60.300.075</b>	DF	60	300	0,75	3000	2,234	30	M
<b>ZMKBSCL60.300.100</b>	DF	60	300	1,00	3000	2,853	30	M
<b>ZMKBSCL60.400.075</b>	DF	60	400	0,75	3000	2,779	30	M
<b>ZMKBSCL60.400.100</b>	DF	60	400	1,00	3000	3,545	30	M
<b>ZMKBSCL60.500.100</b>	DF	60	500	1,00	3000	4,170	30	M
<b>ZMKBSCL60.600.100</b>	DF	60	600	1,00	3000	4,820	30	M

### LOAD DIAGRAM

This diagram illustrates the permissible uniformly distributed loads applied to multiple supports. They comply with IEC 61537 with connection in the centre of the span and the end span = 0,8 x the span.

F = max. admissible load (daN/m)

L = support distance (m)

Max. deflection (m) = L/100

Our KBSCCL cable tray is now available in Defender. Thanks to its unique chemical composition Defender offers a resistance against corrosion equivalent to standard hot-dipped steel.

Other lengths upon request: min. 1.95 m / max. 6 m in 150 mm steps.



**FEATURES**

- Clickable.
- The simplest jointing system, with a single movement.
- Rapid - Just click and ready for the next joint. Immediate alignment at the same time.
- Strong - As strong as a bolted joint.
- Reliable - Maximum load with snap-fit joint. Multiple jointing options available.
- Cost-effective - Working faster results in immediate time and cost savings.
- High standard - Wide and complete range of accessories available.

Etched perforations for:

- better stability
- extra load-bearing capacity
- better cooling

Longitudinal and transverse perforations for:

- better fixing to the support
- convenient cable bundling

Additional equipotential bonding available by 1. snap-fit joint, 2. bolted joint and 3. push-through lip in the bottom.

**TECHNICAL INFORMATION**

Perforation pattern varies according to width.

Transverse perforation as from 200 mm width.

16 mm dia. and 20.4 mm dia. openings to be provided for fitting a gland. SLIS60 snap-in partition to suit width as from 75 mm every 50 mm in the width direction.

Can be secured with VM6.10 or KBVCL as an option.

**Legend finish**

- SZ = Sendzimir
- DF = Defender