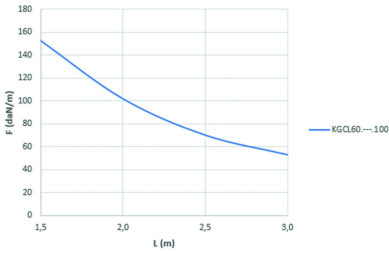
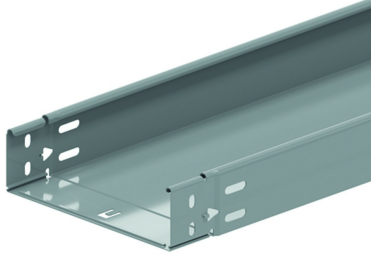


KGCL60

Cable tray not perforated, clickable

Clickable ends
 Closed bottom
 Prefabricated click fold



| | 1,5 | 2,0 | 2,5 | 3,0 |
|---------------|-------|-------|------|------|
| KGCL60....100 | 152,5 | 101,7 | 69,9 | 52,8 |

| Reference | Finish | ↑ mm | ↔ mm | → ← mm | ↔ mm | kg/m | 📦 | Unit |
|-------------------------|--------|---------|---------|------------|---------|-------|----|------|
| KGCL60.075.100 | SZ | 60 | 75 | 1 | 3000 | 1,700 | 60 | M |
| KGCL60.100.100 | SZ | 60 | 100 | 1 | 3000 | 1,900 | 60 | M |
| KGCL60.150.100 | SZ | 60 | 150 | 1 | 3000 | 2,300 | 30 | M |
| KGCL60.200.100 | SZ | 60 | 200 | 1 | 3000 | 2,700 | 30 | M |
| KGCL60.300.100 | SZ | 60 | 300 | 1 | 3000 | 3,500 | 30 | M |
| KGCL60.400.100 | SZ | 60 | 400 | 1 | 3000 | 4,300 | 30 | M |
| ZMKGCL60.075.100 | DF | 60 | 75 | 1 | 3000 | 1,700 | 30 | M |
| ZMKGCL60.100.100 | DF | 60 | 100 | 1 | 3000 | 1,900 | 30 | M |
| ZMKGCL60.150.100 | DF | 60 | 150 | 1 | 3000 | 2,300 | 30 | M |
| ZMKGCL60.200.100 | DF | 60 | 200 | 1 | 3000 | 2,700 | 30 | M |
| ZMKGCL60.300.100 | DF | 60 | 300 | 1 | 3000 | 3,500 | 30 | M |
| ZMKGCL60.400.100 | DF | 60 | 400 | 1 | 3000 | 4,300 | 30 | M |

LOAD DIAGRAM

This diagram illustrates the permissible uniformly distributed loads applied to multiple supports. They comply with IEC 61537 with connection in the centre of the span and the end span = 0,8 x the span.

F = max. admissible load (daN/m)
 L = support distance (m)
 Max. deflection (m) = L/100

Legend finish

- SZ = Sendzimir
- DF = Defender