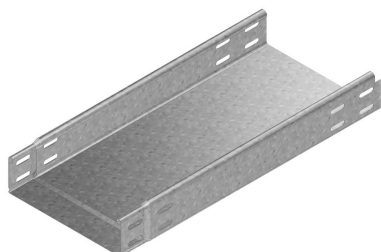


KGI60

Cable tray not perforated, interlocking

Not perforated
Return flanges

To order: Height 35 mm



Reference	↑ mm	↔ mm	→ ← mm	↔ mm	kg/m	📦	Unit
KGI60.300.125	60	300	1,25	3000	4,300	3	M
KGI60.400.125	60	400	1,25	3000	5,300	3	M
KGI60.500.125	60	500	1,25	3000	6,300	3	M
KGI60.600.125	60	600	1,25	3000	7,300	3	M

LOAD DIAGRAM

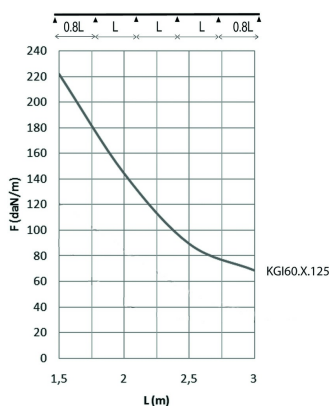
This diagram illustrates the permissible uniformly distributed loads applied to multiple supports. They comply with IEC 61537 with connection in the centre of the span and the end span = 0,8 x the span.

F = max. admissible load (daN/m)

L = support distance (m)

Max. deflection (m) = L/100

For widths > 400 in combination with a cover: Please state explicitly in the order.



Fix with:



Toothed round head bolt / flange nut
VM