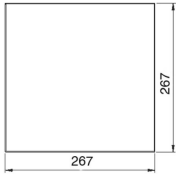
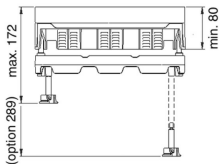
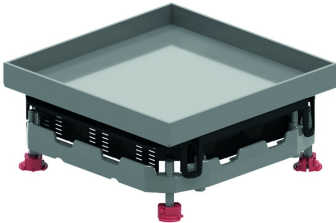


BDVITWD3
Blind cover square, water resistant



Max. load: 2000 N (small surface area)
Max. load: 3000 N (large surface area)
Non-active condition: IP 53
Depth of floor covering: Max. 26 mm

Standard finish		Stainless Steel 304							
HD	Reference	↕ mm	↔ mm	→ ← mm	↔ mm	kg/stk		Stock	Unit
-	BDVITWD3		267		267	2,750	1	X	STK

Tested to EN 50085-2-2.

Depth of floor covering can be reduced by fitting packers OHEVB3.2 and/or OHEVB3.5.

Can be leveled by adjusting 4 bolts on included alu-frame NEOT3.
Mounting without hinges.
Cover can be mounted into cover frame in 4 directions.

A reinforcement kit is available to support heavy loads BDVIZ3.

Ideal for wet areas.