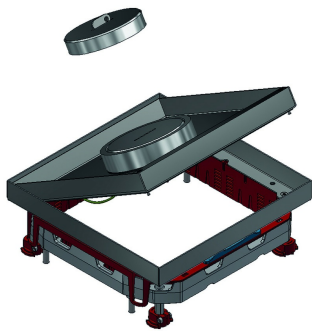


KDVITWD3
Hinged cover square, water resistant



Build-in frame + tileframe + water resistant cable outlet + alu frame + tube cover key

Max. load: 2000 N (small surface area)

Max. load: 3000 N (large surface area)

Active condition: IP 23

Non-active condition: IP 53

Depth of floor covering: Max. 26 mm

Standard finish

Stainless Steel 304

HD	Reference	mm	mm	mm	mm	kg/stk	Stock	Unit
-	KDVITWD3		267		267	3,800	X	STK

Tested to EN 50085-2-2.

Hinged cover for 3 compartments.

Can be leveled by adjusting 4 bolts on included alu-frame NEOT3.

Cover can be mounted into cover frame in 1 direction.

Hinged cover is provided with a watertight cable exit and an aluminium screwcover. This can be extended with a cable exit tube (KUWDT) which guarantees watertightness when in use.

Hinged cover is provided with an earthing strip between cover and frame.

Ideal for wet areas.

