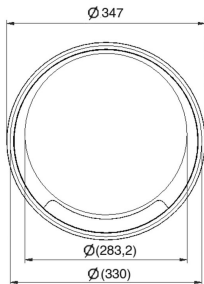
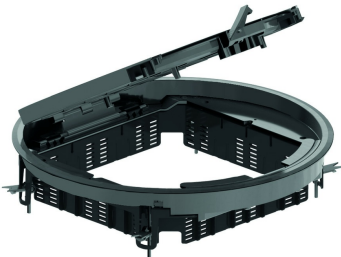


KDRKK3
Hinged cover round, universal



Build-in frame + hinged cover + cable outlet unit

Color: Grey RAL 7011/ Black RAL 9011

Max. load: 1500 N (small surface area)

Max. load: 2000 N (large surface area)

Active condition: IP 20



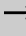
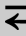

Non-active condition: IP 30

Depth of floor covering: Min. 5 mm - Max. 12 mm

Thickness steel plate : 3 mm

Standard finish

Polypropylene

HD	Reference	 mm	 mm	 mm	 mm	kg/stk		Stock	Unit
-	KDRKK3.5-7011		327		327	2,450	6	X	STK
-	KDRKK3.5-9011		327		327	2,450	6	X	STK

Tested to EN 50085-2-2.

Hinged cover for 3 compartments.

Depth of floor covering is standard 5 mm and can be reduced by fitting packers OHER3.2 and/or OHER3.5.

Can be fixed through included universal clamps in raised floor panels.

- Cut-outs in the floor panels diameter 330 mm (with a tolerance of -1 mm to +2 mm).

- Clamp range between 25 and 50 mm

Hinged cover is provided with 2 cable outlets with integrated push lever and cable organiser.

Hinged cover must not be earthed.

For use in dry floors only.