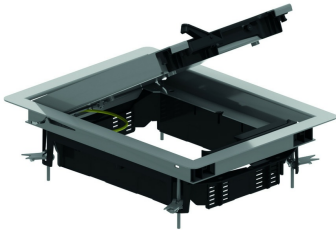


KDVIRK2
Hinged cover rectangular, with border



Build-in frame with border + tileframe + cable outlet

Max. load: 2000 N (small surface area)

Max. load: 3000 N (large surface area)

Active condition: IP 20

Non-active condition: IP 30

Depth of floor covering: Max. 26 mm

Standard finish

Stainless Steel 304

HD	Reference	mm	mm	mm	mm	kg/stk		Stock	Unit
-	KDVIRK2		192		267	2,125	1	X	STK

Tested to EN 50085-2-2.

Hinged cover for 2 compartments.

Depth of floor covering can be reduced by fitting packers OHEV2.2 and/or OHEV2.5

Can be fixed through included universal clamps in raised floor panels.

- Cut-outs in the floor panels 270x195 mm (with a tolerance of -1 mm to +2 mm).
- clamp range between 25 and 45 mm

Hinged cover is provided with 1 cable outlet with integrated push lever and cable organiser.

Hinged cover is provided with an earthing strip between cover and frame.

For use in dry floors only.

