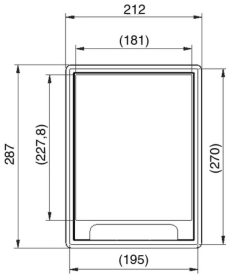
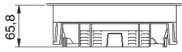
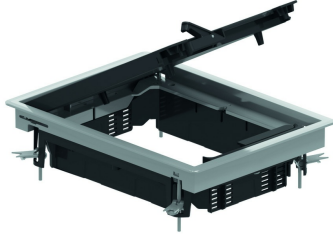


# KDVKK2

## Hinged cover rectangular, universal



Build-in frame + hinged cover + cable outlet unit

Color: Grey RAL 7011 / Black RAL 9011

Max. load: 1500 N (small surface area)

Max. load: 2000 N (large surface area)

Active condition: IP 20

Non-active condition: IP 30

Depth of floor covering: Min. 5 mm - Max. 12 mm

Thickness steel plate : 3 mm

Standard finish

Polypropylene

HD	Reference	↑↓ mm	↔ mm	→  ← mm	↔ mm	kg/stk	📦	Stock	Unit
-	<b>KDVKK2.5-7011</b>		192		267	1,650	6	X	STK
-	<b>KDVKK2.5-9011</b>		192		267	1,650	6	X	STK

Tested to EN 50085-2-2.

Hinged cover for 2 compartments.

Standard depth of floor covering is 5 mm and can be reduced by fitting packers OHEV2.2 and/or OHEV2.5.

Can be fixed through included universal clamps in raised floor panels.

- Cut-outs in the floor panels 270x195 mm (with a tolerance of -1 mm to +2 mm).

- Clamp range between 25 and 45 mm

Hinged cover is provided with 1 cable outlet with integrated push lever and cable organiser.

Hinged cover must not be earthed.

For use in dry floors only.