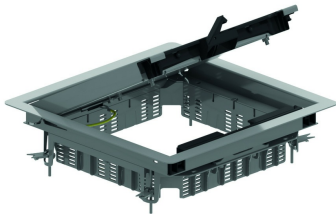


KDVIRK3
Hinged cover square, with border



Build-in frame with border + tileframe + cable outlet

Max. load: 2000 N (small surface area)

Max. load: 3000 N (large surface area)

Active condition: IP 20

Non-active condition: IP 30

Depth of floor covering: Max. 26 mm

Standard finish

Stainless Steel 304

HD	Reference	mm	mm	mm	mm	kg/stk		Stock	Unit
-	KDVIRK3		267		267	2,675	1	X	STK

Tested to EN 50085-2-2.

Hinged cover for 3 compartments.

Depth of floor covering can be reduced by fitting packers OHEV3.2 and/or OHEV3.5

Replace the clamps of the hinged cover by the enclosed clamps of the DOVG.

Hinged cover is provided with 2 cable outlets with integrated push lever and cable organiser.

Hinged cover is provided with an earthing strip between cover and frame.

For use in dry floors only.

