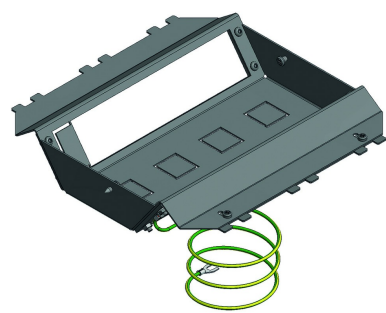


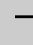
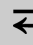



TSB  
Triple apparatus cup



For compact floor installations. Ideal for lower installation depths from 100mm. For lower installation depths use TSBL3.

Reference	 mm	 mm	 mm	 mm	kg/stk		Unit
TSB3					0,688	5	STK

- Tested according EN 50085-2-2.  
For oblique mounting of clip devices 45.
- Standard 8 mounting positions.
  - After removing the rectangular plate, max. 9 mounting positions.
  - After removing 4 plates ( push and turn away), Attema network port adapters can be mounted in the bottom.
  - Fasten by tightening 2 pre-assembled screws with Pozi2 screwdriver.
  - Earthing wire is included and can be connected to NEO floor box.

