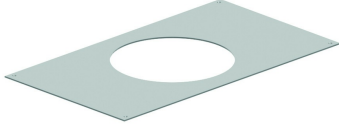


DOVGR.3

Cover for flush floor trunking



For hinged cover KDRKK3.

| Reference | ↑ mm | ↔ mm | → ← mm | ↔ mm | kg/stk | 📦 | Unit |
|---------------------|---------|---------|------------|---------|--------|---|------|
| DOVGR450.4.3 | | 450 | 4 | 800 | 9,450 | 1 | STK |

Replace the clamps of the hinged cover by the enclosed clamps of the DOVG. Replace the cover where you want to mount the flush mounting unit with a cover for the relevant flush mounting unit. Place the flush mounting unit in the opening provided. Fasten the flush mounting unit by tightening the clamps.