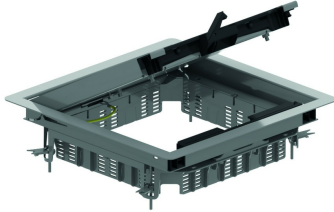


KDVIRK3

Hinged cover square, with border



Build-in frame with border + tileframe + cable outlet

Max. load: 2000 N (small surface area)
 Max. load: 3000 N (large surface area)
 Active condition: IP 20
 Non-active condition: IP 30
 Depth of floor covering: Max. 26 mm

Reference	↕ mm	↔ mm	→ ← mm	↔ mm	kg/stk	📦	Unit
KDVIRK3		267		267	2,675	1	STK

Tested to EN 50085-2-2.

Hinged cover for 3 compartments.

Depth of floor covering can be reduced by fitting packers OHEV3.2 and/or OHEV3.5

Replace the clamps of the hinged cover by the enclosed clamps of the DOVG.

Hinged cover is provided with 2 cable outlets with integrated push lever and cable organiser.
 Hinged cover is provided with an earthing strip between cover and frame.

For use in dry floors only.

