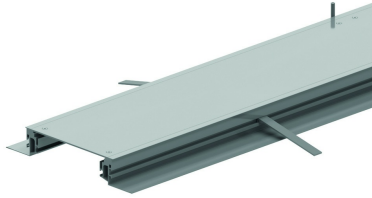


OVG

Open flush floor trunking



Ideal for frequent addition or removal of cables. For both new constructions and renovations.

To order: Till height 150 mm

Reference	↑ mm	↔ mm	→ ← mm	↔ mm	kg/m	📦	Unit
OVG250.3		250		2400	9,406	24	M
OVG350.3		350		2400	11,986	24	M
OVG450.4		450		2400	19,228	24	M

Tested according EN 50085-2-2.

- Used in screeded floors to be finished with carpet or vinyl.
- Levelling range: 55 to 110 mm.
- Hinged covers can be mounted from levelling height 70 mm.
- Universal side for all levelling heights.
- Straightforward assembly of accessories with plastic corner connector.

Each flush floor trunking comes standard with the following products:

- 2 Extrusion profile (OVGP)
- 2 Universal sides (OVGZ)
- 3 Cross bars (OVGTR)
- 2 Carpet borders (OVGTAP)*
- 3 Sealed covers (DOVG)
- 6 Levelling pieces
- 12 Taperedhead metal screws (ST48x25)
- 6 Screed anchor (OVGAN)
- 12 Tapered head bolts (BZ5.16)
- 6 Levelling screws
- 2 Baseplates (OVGVST)
- 4x ST48x22

* Gauge of OVGTAPE depends on the gauge of the cover.

