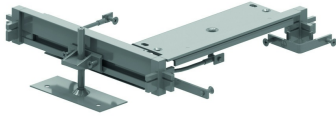


OVGB

Bend for flush floor trunking

Connection angle (OVGHV) + end part (OVGE) + crossbar + 2 earth conductors (OVGEQ - OVGEQH).



Reference	↑ mm	↔ mm	→ ← mm	↔ mm	kg/stk	📦	Unit
OVGB250.3		250			1,011	10	STK
OVGB350.3		350			1,307	10	STK
OVGB450.4		450			1,661	10	STK

