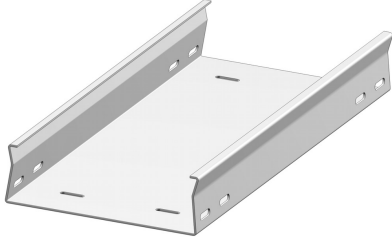


TFCL60

Industrial floor trunking

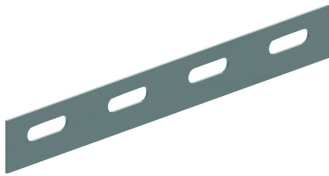


Non-perforated base
Return flanges

| Reference | ↕ mm | ↔ mm | → ← mm | ↔ mm | kg/m | 📦 | Unit |
|-----------------------|---------|---------|------------|---------|-------|----|------|
| TFCL60.100.200 | 60 | 100 | 2 | 3000 | 3,650 | 30 | M |
| TFCL60.150.200 | 60 | 150 | 2 | 3000 | 4,440 | 30 | M |
| TFCL60.200.200 | 60 | 200 | 2 | 3000 | 5,250 | 30 | M |
| TFCL60.250.200 | 60 | 250 | 2 | 3000 | 6,020 | 30 | M |
| TFCL60.300.200 | 60 | 300 | 2 | 3000 | 6,850 | 30 | M |

Fix with:

Application area: Industrial floor trunking is being used in surroundings where robots need to have a permanent freedom of movement and where people need to be allowed to walk on the cable trays. For example, at production lines in the automotive industry.



Joining plate
V35.200