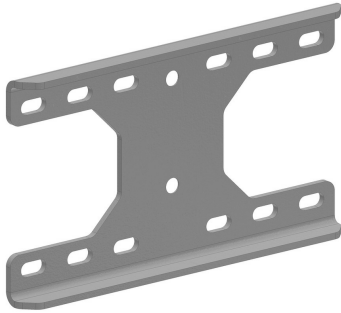


## HDKPIM

## Universal wall mount bracket



Adapter plate for fitting wall supports on an I-beam or 'soft' wall. Goes with HDWKM and WSUN.

Standard finish	Hot-dip galvanised
Optional finish	Duplex system

HD	Reference	↑ mm	↔ mm	≡ mm	↔ mm	kg /stk		Stock	Unit
-	HDKPIM	203	350			3,916	1		STK

Including 2x zinc-plated bolt M10, 2x washer and 2x nut.

When fitting to an I-beam, to be fixed with TIM12 and corresponding MP41.41 profile.

Maximum I-beam width = 300 mm.