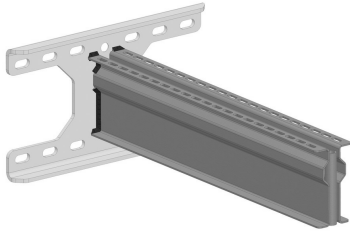


HDWKMD

Heavy welded double bracket



For fixing to I-beam and wall.
When fitting to an I-beam, to be fixed with TIM12 and corresponding MP41.41 profile (300 mm max.).
SWL is limited to 615 daN when fitting on the open side of the I-beam.
Maximum I-beam width = 300 mm.

| | |
|-----------------|--------------------|
| Standard finish | Hot-dip galvanised |
| Optional finish | Duplex system |

| | Max. load (in daN) |
|------------|--------------------|
| HDWKMD500 | 1500 |
| HDWKMD600 | 1300 |
| HDWKMD800 | 950 |
| HDWKMD1000 | 750 |

| HD | Reference | ↑ mm | ↔ mm | ≡ mm | ↔ mm | kg /stk | | Stock | Unit |
|----|------------|---------|---------|---------|---------|------------|---|-------|------|
| - | HDWKMD500 | 170 | 525 | | | 4,279 | 1 | v | STK |
| - | HDWKMD600 | 170 | 625 | | | 4,915 | 1 | v | STK |
| - | HDWKMD800 | 170 | 825 | | | 6,189 | 1 | v | STK |
| - | HDWKMD1000 | 170 | 1025 | | | 7,463 | 1 | v | STK |

Max. load (in daN): uniformly distributed over complete width of cantilever brackets.