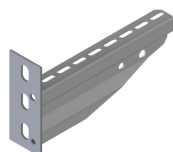


# HDWKML

## Welded bracket



For fixing on the wall and also on the ceiling profile.

	Max. load (in daN)
HDWKML100	295
HDWKML200	338
HDWKML300	325
HDWKML400	400
HDWKML500	355
HDWKML600	310

Reference	↕ mm	↔ mm	→  ← mm	↔ mm	kg/stk	📦	Unit
<b>HDWKML100</b>	125	117			0,277	12	STK
<b>HDWKML200</b>	125	217			0,438	12	STK
<b>HDWKML300</b>	125	317			0,706	12	STK
<b>HDWKML400</b>	133,5	417			0,936	6	STK
<b>HDWKML500</b>	133,5	517			1,130	6	STK
<b>HDWKML600</b>	133,5	617			1,326	6	STK

Max. load (in daN): uniformly distributed over complete width of cantilever brackets.