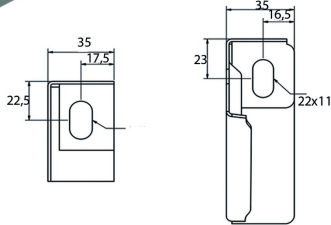


# WSUN

## Universal support bracket



For direct fixing to walls and ceiling profiles

	Max. load (in daN)
WSUN100	120
WSUN150	120
WSUN200	120
WSUN300	120
WSUN400	120

Reference	Finish	↕ mm	↔ mm	→  ← mm	↔ mm	kg/stk	📦	Unit
<b>WSUN100</b>	SZ	53	117			0,130	12	STK
<b>WSUN200</b>	SZ	69	217			0,257	12	STK
<b>WSUN300</b>	SZ	81	317			0,388	12	STK
<b>WSUN400</b>	SZ	93	417			0,534	6	STK
<b>ZMWSUN100</b>	DF	53	117			0,130	12	STK
<b>ZMWSUN200</b>	DF	69	217			0,257	12	STK
<b>ZMWSUN300</b>	DF	81	317			0,388	12	STK
<b>ZMWSUN400</b>	DF	93	417			0,534	6	STK

Max. load (in daN): uniformly distributed over complete width of cantilever brackets.

**Legend finish**  
 - SZ = Sendzimir  
 - DF = Defender