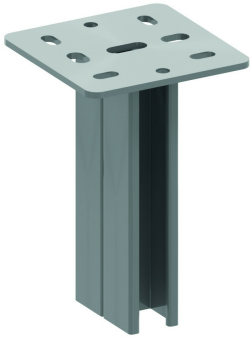


HDHSMD

Double ceiling profile



Ceiling profile: MP41.41 double
Welded headplate: 135x135 mm

Max. load: 3500 daN
Thickness head plate: 5 mm

Reference	↑ mm	↔ mm	→ ← mm	↔ mm	kg/stk	📦	Unit
HDHSMD200	800				1,650	1	STK
HDHSMD300	300				2,150	1	STK
HDHSMD400	400				2,650	1	STK
HDHSMD500	500				3,300	1	STK
HDHSMD600	600				3,900	1	STK
HDHSMD800	800				4,900	1	STK
HDHSMD1000	1000				6,000	1	STK
HDHSMD1200	1200				7,200	1	STK
HDHSMD1500	1500				9,000	1	STK

For single and double sided fixing of brackets.
Use sliding nut PNP10 and hexagonal bolt B10.30.
Protection cap in yellow PVC: DOP41.82.