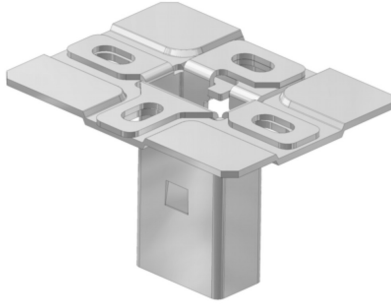


KPCL

Clippable headplate



Clippable headplate for ceiling
profile

Standard finish

Pre-galvanised

HD	Reference	↑ mm	↔ mm	≡ mm	↔ mm	kg /stk		Stock	Unit
-	KPCL41.21	84	130			0,53	10	v	STK

To order per full packaging.

Innovative and low cost.

Tested according to CEI/IEC 61537.

The end plate should always be fixed with the supplied supporting plate.