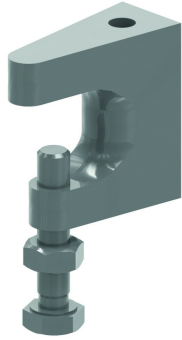


# FL

## Fixing clamp for threaded rod



Standard finish

Electro zinc-plated

Article	Max. load (in daN)	Clamping range
FL1	250	0-22 mm
FL2	250	0-19 mm
FL3	350	5-25 mm

HD	Reference	↕ mm	↔ mm	→  ← mm	↔ mm	kg/stk	📦	Stock	Unit
-	<b>FL1</b>			M8		0,140	50	X	STK
-	<b>FL2</b>			M10		0,150	50	X	STK
-	<b>FL3</b>			M12		0,210	50	X	STK

The fixing clamp is useful for I-profiles which are placed horizontally and for I-profiles with a certain angle of inclination. The fixing clamp is delivered with an adjustable screw and lock-nut. Threaded rod should be ordered separately.