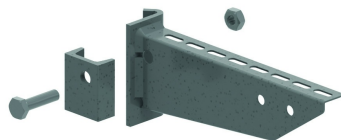


# HDHKI

## Welded clamping bracket

For fixing to ceiling profiles HDHSIZ and HDIPE80S



	Max. load (in daN)
HDHKI100	300
HDHKI150	300
HDHKI200	300
HDHKI250	330
HDHKI300	330
HDHKI400	310
HDHKI500	310
HDHKI600	300

Reference	↑ mm	↔ mm	→  ← mm	↔ mm	kg/stk	📦	Unit
<b>HDHKI100</b>	90	117			0,513	24	STK
<b>HDHKI150</b>	90	167			0,569	24	STK
<b>HDHKI200</b>	90	217			0,631	24	STK
<b>HDHKI250</b>	100	267			0,688	12	STK
<b>HDHKI300</b>	100	317			0,881	12	STK
<b>HDHKI400</b>	117	417			1,059	12	STK
<b>HDHKI500</b>	117	517			1,428	6	STK
<b>HDHKI600</b>	117	617			1,740	6	STK

Welded headplate.

Included: clamp plate, bolt HDB10.40 and nut HDM10.

Max. load (in daN): uniformly distributed over complete width of cantilever brackets.