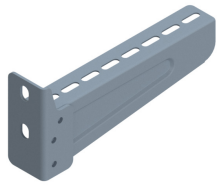


# WKST

## Clinched bracket



For fixing on the wall and also on the ceiling profile.

	Max. load (in daN)
WKST100	130
WKST200	130
WKST300	130
WKST400	130
WKST500	150
WKST600	150

Reference	↑ mm	↔ mm	→  ← mm	↔ mm	kg/stk	📦	Unit
<b>WKST100</b>	100	45		100	0,254	12	STK
<b>WKST200</b>	100	45		200	0,371	12	STK
<b>WKST300</b>	120	45		300	0,532	12	STK
<b>WKST400</b>	120	45		400	0,672	6	STK
<b>WKST500</b>	120	45		500	0,970	6	STK
<b>WKST600</b>	120	45		600	1,145	6	STK