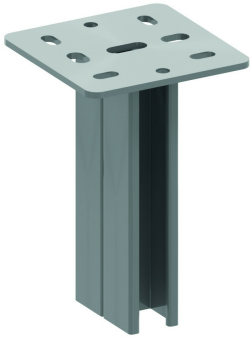


# HSMD

## Double ceiling profile



Ceiling profile: MP41.41 double  
Welded headplate: 135x135 mm

Max. load: 3500 daN  
Thickness head plate: 5 mm

Reference	↑ mm	↔ mm	→  ← mm	↔ mm	kg/stk	📦	Unit
<b>HSMD200</b>	200				1,600	15	STK
<b>HSMD300</b>	300				2,150	1	STK
<b>HSMD400</b>	400				2,650	1	STK
<b>HSMD500</b>	500				3,300	1	STK
<b>HSMD600</b>	600				3,900	1	STK

For single and double sided fixing of brackets.  
Use sliding nut PNP10 and hexagonal bolt B10.30.  
Protection cap in yellow PVC: DOP41.82

