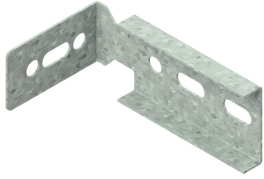


I6KLM100AH

Horizontal branch hook for I6KLM100



Slides in the C-opening of the sidewalls .

| Reference | ↕ mm | ↔ mm | → ← mm | ↔ mm | kg/stk | 📦 | Unit |
|-------------------|---------|---------|------------|---------|--------|---|------|
| I6KLM100AH | 71 | 169 | | 100 | 0,241 | 2 | STK |

Minimum number bolts and nuts: 4 pieces.

Pickled and passivated.

Fix with:



Giant washer
(DIN 125-1 A)
I6RO



Nut (DIN 934)
I6M



Round head
square neck bolt
(DIN 603)
I6RBK