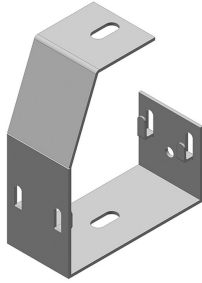


OBGVF

Open C-suspension bracket for VFU(L)



Standard finish

Pre-galvanised

| HD | Reference | ↑ mm | ↔ mm | ≡ mm | ↔ mm | kg /stk | | Stock | Unit |
|----|-----------|---------|---------|---------|---------|------------|----|-------|------|
| - | OBGVF050 | 135 | 55 | | | 0,175 | 12 | v | STK |
| - | OBGVF100 | 135 | 102 | | | 0,245 | 12 | v | STK |

To order per full packaging.

To be mounted with threaded rod TIM6 or TIM8.

Max. load (in daN): uniformly distributed over complete width of cantilever brackets.