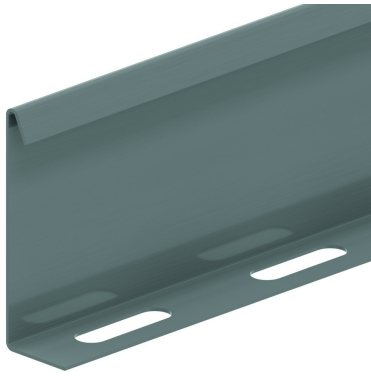


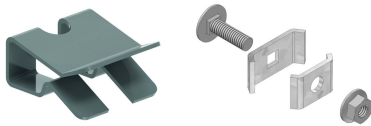
# SLOS

## Bolt-in partition



Reference	Finish	↑ mm	↔ mm	→  ← mm	↔ mm	kg/m	📦	Unit
<b>SLOS35</b>	SZ	28			3000	0,330	150	M
<b>SLOS60</b>	SZ	53			3000	0,511	120	M
<b>SLOS60.2000</b>	-	53			1900	0,793	520	M
<b>SLOS85</b>	SZ	78			3000	0,680	60	M
<b>SLOS110</b>	SZ	103			3000	0,820	30	M
<b>ZMSLOS35</b>	DF	28			3000	0,257	150	M
<b>ZMSLOS60</b>	DF	60			3000	0,397	120	M
<b>ZMSLOS85</b>	DF	78			3000	0,529	60	M
<b>ZMSLOS110</b>	DF	103			3000	0,638	30	M

### Fix with:



Clips for fixing  
SLOS to VFU(L)  
VFSLOSCL

Joining clamp  
VFK

Fixing set: 1 per meter.

**Legend finish**  
- SZ = Sendzimir  
- DF = Defender

