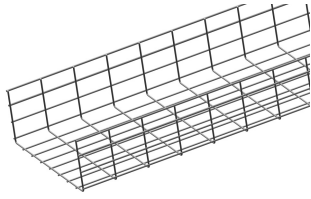


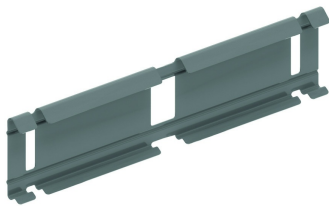
VFU135

Wire cable tray for heavy duty



Screen: 50 x 100 mm
Wire: Ø 4.50 mm and 5.50 mm

Fix with:



Snap-on joiner for VFU(L)
KPVF

Reference	Finish	↑ mm	↔ mm	→ ← mm	↔ mm	kg/m	📦	Unit
VFU135.250	ZP	135	250		3000	2257	3	M
VFU135.350	ZP	135	350		3000	2636	3	M
VFU135.450	ZP	135	450		3000	3015	3	M
VFU135.550	ZP	135	550		3000	3394	3	M
ZAVFU135.250	DF	135	250		3000	2257	3	M
ZAVFU135.350	DF	135	350		3000	2636	3	M
ZAVFU135.450	DF	135	450		3000	3015	3	M
ZAVFU135.550	DF	135	550		3000	3394	3	M

LOAD DIAGRAM

This diagram illustrates the permissible uniformly distributed loads applied to multiple supports. They comply with IEC 61537 with connection to 1/5 of the span and the end span = 0,8x the span. When the joint is situated in the centre of the span, a reduction of 0,7x the admissible load is to be taken into account.

F = max. admissible load (daN/m)

L = support distance (m)

Max. deflection (m) = L/100

Legend finish

- ZP = Zinc plated

- DF = Defender