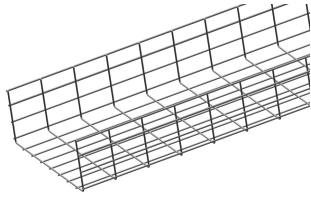


VFU160

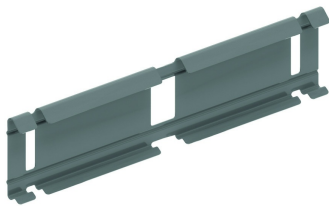
Wire cable tray for heavy duty



Screen: 50 x 100 mm
Wire: Ø 4.50 mm and 5.50 mm

Fix with:

Reference	Finish	↑ mm	↔ mm	→ ← mm	↔ mm	kg/m	📦	Unit
VFU160.300	ZP	160	300		3000	2636	3	M
VFU160.400	ZP	160	400		3000	3015	3	M
VFU160.500	ZP	160	500		3000	3394	3	M
ZAVFU160.300	DF	160	300		3000	2636	3	M
ZAVFU160.400	DF	160	400		3000	3015	3	M
ZAVFU160.500	DF	160	500		3000	3394	3	M



Snap-on joiner for VFU(L)
KPVF

LOAD DIAGRAM

This diagram illustrates the permissible uniformly distributed loads applied to multiple supports. They comply with IEC 61537 with connection to 1/5 of the span and the end span = 0,8x the span. When the joint is situated in the centre of the span, a reduction of 0,7x the admissible load is to be taken into account.

F = max. admissible load (daN/m)
L = support distance (m)
Max. deflection (m) = L/100

Legend finish

- ZP = Zinc plated
- DF = Defender