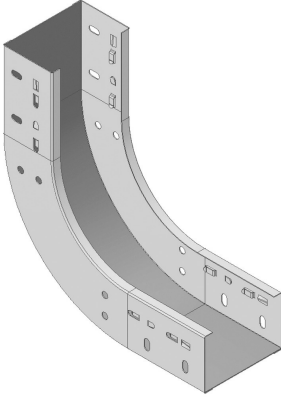


## SBCL

## Snap-in rising elbow 90°



Snap-in system with cable tray  
KBSCL60, KBS60 and KBSI60

Standard finish

Pre-galvanised

Optional finish

Coating

HD	Reference	↑ mm	↔ mm	≡ mm	↔ mm	kg /stk		Stock	Unit
-	SBCL90.60.050	60	50			0,55	1	v	STK
-	SBCL90.60.075	60	75			0,65	1		STK
-	SBCL90.60.100	60	100			0,73	1	v	STK
-	SBCL90.60.150	60	150			0,88	1	v	STK
-	SBCL90.60.200	60	200			1	1	v	STK
-	SBCL90.60.300	60	300			1,18	1	v	STK
-	SBCL90.60.400	60	400			1,43	1	v	STK
-	SBCL90.60.500	60	500			1,9	1	v	STK
-	SBCL90.60.600	60	600			2,15	1	v	STK

Opening for extra locking using 4x VM6.10.

Openings provided for fitting a cover.

Only available in height 60 mm.