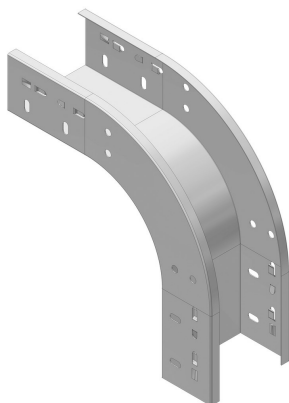


## VBCL


## Snap-in low elbow 90°



Snap-in system with cable tray  
KBSCl60, KBS60 and KBSI60

Standard finish Pre-galvanised

Optional finish Coating

HD	Reference	↑ mm	↔ mm	≡ mm	↔ mm	kg /stk		Stock	Unit
-	VBCL90.60.050	60	50			0,55	1	v	STK
-	VBCL90.60.075	60	75			0,63	1	v	STK
-	VBCL90.60.100	60	100			0,65	1	v	STK
-	VBCL90.60.150	60	150			0,78	1	v	STK
-	VBCL90.60.200	60	200			0,85	1	v	STK
-	VBCL90.60.300	60	300			1,08	1	v	STK
-	VBCL90.60.400	60	400			1,33	1	v	STK
-	VBCL90.60.500	60	500			1,43	1	v	STK
-	VBCL90.60.600	60	600			1,6	1	v	STK

Opening for extra locking using 4x VM6.10.

Openings provided for fitting a cover.

Only available in height 60 mm.