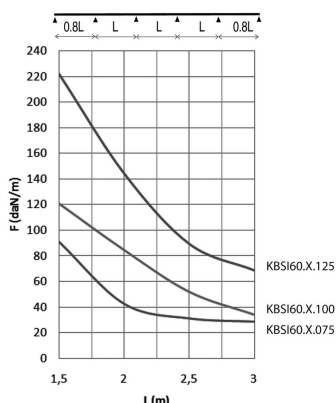
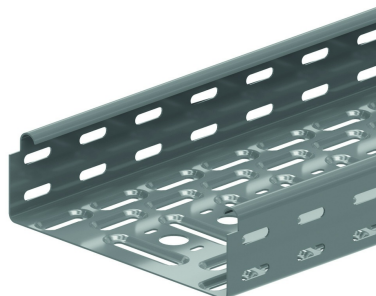


# KBSI60

## Cable tray with interlocking ends

Interlocking ends  
Alternative perforations  
Return flanges



Reference	↑ mm	↔ mm	→  ← mm	↔ mm	kg/m	📦	Unit
<b>KBSI60.075.125</b>	60	75	1,25	3000	1,815	60	M
<b>KBSI60.100.125</b>	60	100	1,25	3000	2,089	60	M
<b>KBSI60.150.125</b>	60	150	1,25	3000	2,525	30	M
<b>KBSI60.200.125</b>	60	200	1,25	3000	2,974	30	M
<b>KBSI60.300.125</b>	60	300	1,25	3000	3,867	30	M
<b>KBSI60.400.125</b>	60	400	1,25	3000	4,804	30	M
<b>KBSI60.500.125</b>	60	500	1,25	3000	5,726	30	M
<b>KBSI60.600.125</b>	60	600	1,25	3000	6,655	30	M

### LOAD DIAGRAM

This diagram illustrates the permissible uniformly distributed loads applied to multiple supports. They comply with IEC 61537 with connection in the centre of the span and the end span = 0,8 x the span.

F = max. admissible load (daN/m)  
L = support distance (m)  
Max. deflection (m) = L/100

Other lengths on request: max. 6 m per steps of 100 mm. Can be attached in three ways: -KBVCL -VM6.10 -VMK6.10 (=RBK6.10 & RM6)