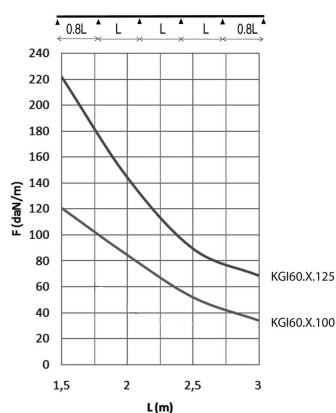
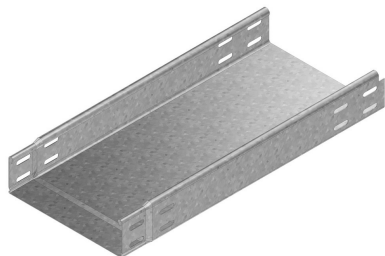


## KGI60

### Cable tray not perforated, interlocking



Fix with:



Fast locking for  
KBSI  
KBV



Toothed round  
head bolt / flange  
nut  
VM

Not perforated  
Return flanges

Standard finish	Pre-galvanised
Optional finish	Hot-dip galvanised
Optional finish	Coating
Optional finish	Height 35 mm

HD	Reference	↑ mm	↔ mm	≡ mm	↔ mm	kg /m		Stock	Unit
HD	KGI60.075.100	60	75	1	3000	1,7	3	v	M
HD	KGI60.100.100	60	100	1	3000	1,9	3	v	M
HD	KGI60.150.100	60	150	1	3000	2,3	3	v	M
HD	KGI60.200.100	60	200	1	3000	2,7	3	v	M
HD	KGI60.300.100	60	300	1	3000	3,5	3	v	M
-	KGI60.300.125	60	300	1,25	3000	4,3	3	v	M
HD	KGI60.400.100	60	400	1	3000	4,3	3	v	M
-	KGI60.400.125	60	400	1,25	3000	5,3	3	v	M
-	KGI60.500.125	60	500	1,25	3000	6,3	3	v	M
-	KGI60.600.125	60	600	1,25	3000	7,3	3	v	M

#### LOAD DIAGRAM

This diagram illustrates the permissible uniformly distributed loads applied to multiple supports. They comply with IEC 61537 with connection in the centre of the span and the end span = 0,8 x the span.

$F$  = max. admissible load (daN/m)

$L$  = support distance (m)

Max. deflection (m) =  $L/100$