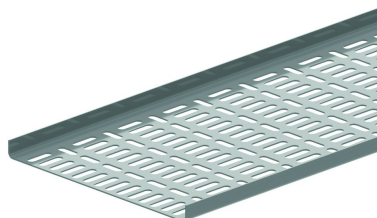


# NATO15

## Perforated cable tray - upright flanges

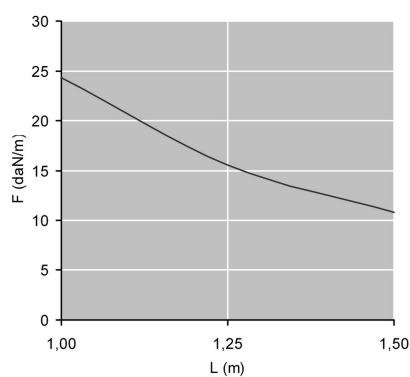
Linear and alternative perforations  
Upright flanges



Reference	↑ mm	↔ mm	→  ← mm	↔ mm	kg/m		Unit
<b>NATO15.050.125</b>	15	50	1,25	2000	0,730	40	M
<b>NATO15.100.125</b>	15	100	1,25	2000	1,050	20	M
<b>NATO15.150.125</b>	15	150	1,25	2000	1,350	20	M
<b>NATO15.200.125</b>	15	200	1,25	2000	1,700	20	M
<b>NATO15.300.125</b>	15	300	1,25	2000	2,400	20	M

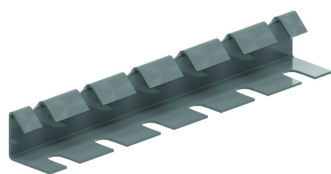
### LOAD DIAGRAM

Mounted in continuous span with the joining plates 1/5 away from the supports. Safety factor = 2.



F = max. admissible load (daN/m)  
L = support distance (m)  
L/200 = deflection (m)

### Fix with:



Joiner  
V15.200